

# artikel pak dayat 6

*by* Hidayat Hidayat

---

**Submission date:** 20-Jun-2023 05:21PM (UTC+0700)

**Submission ID:** 2119627784

**File name:** jeas\_0917\_6346.pdf (843.34K)

**Word count:** 2319

**Character count:** 12394



## EVALUATION OF MICRO HYDRO POWER PLANT (MHPP) USING OVERALL EQUIPMENT EFFECTIVENESS (OEE) METHOD

Hidayat, Arnita and Ikhsan Irdas

Electrical Engineering Department, Faculty of Industrial Technology, Bung Hatta University, Padang, Indonesia  
E-Mail: hdyttanjung@yahoo.com

### ABSTRACT

This paper focuses on evaluation of micro hydropower plant (MHPP) that applies overall equipment effectiveness (OEE) method. MHPP are used on the rural electrification and does not necessarily supply electricity to the PLN grid. They are utilized in isolated and off-grid systems for decentralized electrification. Some identified issues or problems are the results of insufficient site assessment, poor quality of power plant facilities and electro-mechanical equipment, controller equipment and inadequate operation and maintenance. To determine performance of MHPP is done the evaluation using OEE method especially some of the MHP in districts South Solok. The first step is observing the real condition of MHPP to find technical or nontechnical of primary and secondary data. The data are classified according to which needed by OEE method. It has three main components such as availability, performance and quality. There are seven MHP as the research object. The results are obtained an availability average ie 68%, performance average ie 52% and quality average 67%. These achievements shown the MHPP production only reached a value of OEE ie 38%. Therefore, the production in the standard of the Japan Institute of Plant Maintenance (JIPM) is a bad class. The strong issues or problems of MHPP that found are management 17,2%, control systems 7,3%, turbine 10,6%, generator 32,7% and transmission 31,9%. Management includes costumer payment, skill of the operator and maintenance. Generators are major contributors to the problem because there are many MHPP does not have automatic control equipment.

**Keywords:** evaluation, MHP, OEE, JIPM.

### INTRODUCTION

Micro Hydro Power Plant (MHPP) is that utilizes river flow (run off river). MHPP is typically used on the rural electrification and does not necessarily supply electricity to the PLN grid. They are utilized in isolated and off-grid systems for decentralized electrification. Some identified issues or problems are the results of insufficient site assessment, poor quality of power plant facilities and electro-mechanical equipment, control equipment and inadequate operation and maintenance [1]. Today, MHPP has been developed into a grid system to serve a region. The controller equipment is required to ensure the parallel operation of power plants in power system. Such controller is also required for Micro hydro power plants to work in interconnected micro hydro power plants. The approach with frequency droop to make a Mini-Grid model has been studied that describes performance of simulated droop based electronic load controller for interconnected micro hydro power plants or mini-grid [2]. Therefore, it is required quality of power generation in accordance with the standard. Similarly, the equipment that used must also be standard but it is limited. West Sumatra Province has abundant water potential to be used as a electric power generation renewable energy in the large, medium and small capacity. Utilization of water as small scale power plants, that called micro hydro power plant (MHPP) is widely used in remote areas. More than 150 power plant station in West Sumatra Province with capacity are various 10 kW, 16 kW, 20 kW, 22 kW, 24 kW, 26 kW, 40 kW, 50 kW, 64 kW etc. Base on investigation, several problems are found in MHPP such as; short life time, short duration operation, bad voltage and frequency quality [3],[4],[5]

The main objective of this study is to evaluate of MHPP quality that applies the overall equipment effectiveness (OEE). To determine the condition of MHPP is used the standard of the Japan Institute of Plant Maintenance (JIPM) [6]. It is required to determine the main issues of MHPP, so it can be obtained the step to be grid system or mini grid system. In this research is taken eighteen of MHPP as sample that location in South Solok district. Recently, several researcher have found the voltage and frequency control equipment of MHPP such as micro hydro power generation based on fuzzy logic control such as micro hydro power generation based on fuzzy logic approach in order to improve voltage profile of alternative power generation [7].

### MATERIAL AND METHODS

#### a) Overall equipment effectiveness (OEE)

OEE is the simple method to evaluate that practical and powerful to evaluate the production system. This method usually takes the most common sources of manufacturing productivity losses and places them into three categories such as; Availability (A), Performance (P) and Quality (Q). Generally, that are represented in percent (%). OEE is defined as the ratio of fully productive time to plan production time [8],[9]. The schema of OEE System is shown in Figure-1. Determine of Overall Equipment Effectiveness (OEE) is used "the six big losses", such as;

1. Down time loss that influence of availability.
2. Speed loss that influence of performance.
3. Quality loss that influence of quality.

In practice OEE is calculated as;



$$OEE = A \times P \times Q \quad (1)$$

1) Availability ( $A$ ): Availability is defined the ratio of operating time (which is simply planned time productionless down time) to planned production time, and accounts for loss down time. It is calculated as:

$$A = \frac{\text{Operating Time}}{\text{Planned Production Time}} \times 100\% \quad (2)$$

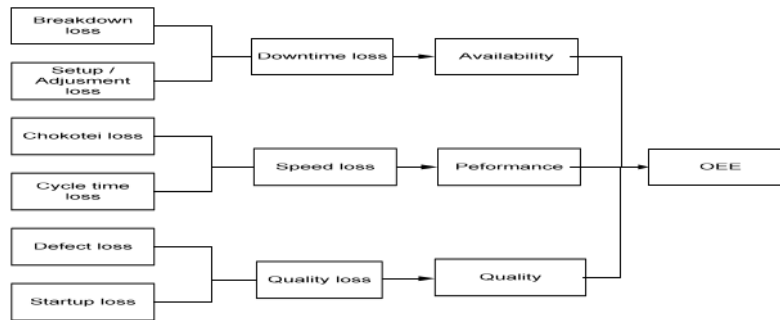


Figure-1. The schema of OEE system.

Operating time is the length of MHPP operational a year, and planned production time is length of operating expectations a year ie 8760 hours.

2) Performance ( $P$ ): Performance is defined the ratio of net operating time to operating time, and accounts for speed loss. In practice it is calculated as:

$$P = \frac{\text{Ideal Cycle Time} \times \text{Total Pieces}}{\text{Operating Time}} \times 100\% \quad (3)$$

Ideal cycle time is defined the ideal time that used to result a product. Total pieces are number of product. Operating time is the real time of length operating a year ie 8760 hour.

3) Quality ( $Q$ ): Quality is defined the ratio of fully productivetime (time for good pieces) to net operating time (time for total pieces). In practice it is calculated as:

$$Q = \frac{\text{Good Pieces}}{\text{Total Pieces}} \times 100\% \quad (4)$$

Japan Institute of Plant Maintenance (JIPM) had been had standard benchmark of OEE that implemented in the world. OEE base on the standar benchmark JIMP that shown in Table 1.

Table-1. OEE standard benchmark of JIMP.

OEE(Overall Equipment Effectiveness) JIMP	Presentage value OEE (%)
Perfect	100 %
World Class	≥ 85 %
Normal	≥ 60% and < 85 %
Low	≥40and < 60%

Usually, OEE world class according to standard that recognized is; Availability ≥90% Performance ≥ 95% Quality 99.9% and OEE ≥ 85%.

#### b) Flowchart

The step-by-step process on how to evaluate the MHPP is illustrated in Figure-2.

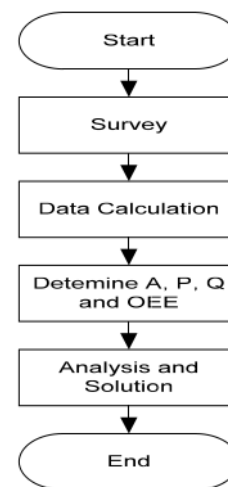


Figure-2. Flowchart evaluation of MHPP using OEE method.

The first step is survey to take the data to MHPP area especially South Solok District. The data include MHPP equipment, operation, management, maintenance, capacity, customer, disturbance and load. The data are grouped and calculated in accordance with purpose of the OEE method. Further, determining value of availability ( $A$ ), Performance ( $P$ ), Quality ( $Q$ ) and the overall equipment effectiveness (OEE). These results are analyzed to assess the condition of MHPP, and then used to determine the corrective measures. The cause of disruption MHPP are recorded and calculated the percentage value



of interference. It is required to determine the cause of the biggest distrubents of MHPP.

**c) Data and calculation**

The data are collected by survey to each MHPP location, that include rating capacity, actual generated energy, customer amount, actual time operation, total available time, total set up time and total break down time in a year. There are eighteen MHPP as sample data, such as (1) MHPP Ulu Suliti II, (2) MHPP Ulu Suliti IV, (3) MHPP Koto Baru, (4) MHPP Pulakek, (5) MHPP Karang Putih, (6) MHPP Sungai Bangku and (7) MHPP Simancuang. (8) MHPP Manggih, (9) MHP Wonorejo, (10) MHPP Berta, (11) MHPP Liki Tengah, (12) MHPP Sungai Aia Ateh, (13) MHPP Batang Lolo, (14) MHPP Paninjauan, (15) MHPP Taratak Tinggi, (16) MHPP Pasi Panjang, (17) MHPP Sapan Salak, (18) MHPP Sapan Sungai Nan Duo. Operating data of MHPP that have been found in location can be shown in Table 2.

Base on data in Table-2, availability (A) of MHPP Ulu Suliti II can be calculated using equation. (2), where operating time can be obtained of total availability time minus time breakdown minus time set up, so;

$$A = \frac{\text{Total Time} - (\text{Time Breakdown} + \text{Time Setup})}{\text{Total Time}} \times 100\%$$

$$A = \frac{8592H - (4439H + 18,9H)}{8592H} \times 100\% = 48\%$$

**Table-2.** Operation data of MHPP in a year.

No MHPP	Rating Capacity (kW)	Effective Day of Operation (Days)	Loading Time		Total Operation (Hours)	Actual Time (Hours)	Energy Generated (kWh)	Energy Capacity (kWh)
			Senp (Hours)	Breakdown (Hours)				
1	10	358	17,9	4439,67	8592	4134,43	41344,3	87600
2	10	358	287	3759	8592	4546	45460	87600
3	10	351	254,5	3539,25	8424	4630,25	46302,5	87600
4	16	358	59,67	347	8592	8185,33	130965,3	140160
5	40	358	60,83	5905,67	8592	2625,5	105020	350400
6	20	358	89,5	317,16	8592	8185,34	163706,8	175200
7	20	365	73	182,5	8760	8504,5	170090	175200
8	10	365	91,25	91,25	8760	8577,5	85775	87600
9	50	358	182,5	182,5	8592	8227	411350	438000
10	20	358	182,5	182,5	8592	8227	164540	175200
11	64	358	180	180	8592	8232	526848	560640
12	24	358	358	2864	8592	5370	128880	210240
13	22	358	89,5	89,5	8592	8413	185086	192720
14	50	358	89,5	1163,5	8592	7339	366950	438000
15	50	358	89,5	89,5	8592	8413	420650	438000
16	20	358	182,5	5910,5	8592	2499	49980	175200
17	40	358	89,5	89,5	8592	8413	336520	350400
18	26	358	89,5	89,5	8592	8413	218738	227760

Several issues or problems that cause MHPP fail operate as shown in Table-3. Performance of MHPP Ulu

Suliti II can be determined using equation. (3), where ideal cycle time can be obtained by multiplied customer amount with generated energy multiplied actual time, then;

$$P = \frac{\text{Customer} \times \text{Generated Energy} \times \text{Actual Time}}{\text{Customer} \times \text{Energy Capacity} \times \text{Total Time}} \times 100\%$$

$$P = \frac{25 \text{ KK} \times 41344 \text{ kWh} \times 4134 \text{ h}}{825 \text{ KK} \times 87600 \text{ kWh} \times 8595 \text{ h}} \times 100\% = 23\%$$

The Quality of MHP Ulu Suliti II can be determined using equation. (4), where good peace can be obtained with to devide total generated energy with total energy capacity, then;

$$Q = \frac{\text{Total Generated Energy}}{\text{Total Energy Capacity}} \times 100\%$$

$$Q = \frac{41344 \text{ kWh}}{87600 \text{ kWh}} \times 100\% = 47\%$$

Further, OEE can be determined by using equation. (1), then;

$$\text{OEE} = 48\% \times 23\% \times 47\% = 5\%$$

The parameter A, P, Q and OEE for the others MHPP can be calculated same as way the above, further the result as shown in Table \$4.

**Table-3.** The causes and frequency of operation failure MHPP.

Issues/problems	Failure Frequency of MHPP								
	1	2	3	4	5	6	7	8	9
Management	Electric payment	-	-	-	1	2	-	-	-
	Operator salary	-	-	-	4	2	-	-	-
	ELC	-	-	-	-	-	-	-	-
Control System	Ballast	-	-	-	-	-	-	-	-
	MCB	-	1	-	-	-	-	-	-
	Ampere meter	-	-	-	-	-	-	-	-
	Volt meter	-	-	-	-	-	-	-	-
	Hertz meter	1	1	-	-	1	-	-	-
	Adapter	-	-	-	-	-	-	-	-
Turbine	Runner	-	-	-	-	-	1	-	-
	Guide Vane	-	-	-	-	-	1	-	-
	Turbin Pulley	-	3	-	-	-	-	-	-
	Bearing	-	-	-	-	-	1	-	-
	BF Turbin	-	-	1	-	-	-	-	-
Generator	Generator winding	1	1	2	1	1	1	-	1
	Brush	6	1	-	4	2	-	3	3
	BF Generator	-	-	-	-	-	-	-	-
	Generator Pulley	-	1	-	-	-	-	-	-
Transmission	Pole	1	-	1	1	1	-	1	-
	Conductor	-	-	-	-	-	-	-	-
	V belt	1	-	1	1	1	1	1	-
		10	11	12	13	14	15	16	17
Management	Electric payment	-	1	2	-	1	-	1	1
	Operator salary	-	-	2	-	-	-	-	4
	ELC	-	-	-	-	-	-	-	-
Control System	Ballast	-	-	-	-	-	-	-	-
	MCB	-	-	-	-	-	1	1	-
	Ampere meter	-	-	-	-	-	-	-	-
	Volt meter	-	-	-	-	-	-	-	-
	Hertz meter	-	-	1	1	1	1	-	-
	Adapter	-	-	-	-	-	-	-	-
	Runner	-	-	-	-	-	-	-	-
Turbine	Guide Vane	-	-	-	1	-	-	-	-
	Pulley Turbin	-	-	-	-	-	-	-	-
	Bearing	-	-	-	-	-	-	-	-
	BF Turbin	-	1	-	-	-	-	-	1
Generator	Generator winding	1	2	1	-	1	2	-	2
	Brush	1	-	2	-	-	-	-	4
	BF Generator	-	-	-	-	-	-	-	-
	Generator Pulley	-	-	-	-	-	-	-	-
Transmission	Pole	1	1	1	5	8	1	1	1
	Conductor	-	-	1	-	-	-	1	-
	V belt	1	1	1	-	2	-	2	1



**Table-4.** The result OEE of MHPP.

Number of MHPP	Availability (%)	Performance (%)	Quality (%)	OEE (%)
1	48%	23%	47%	5%
2	53%	27%	52%	8%
3	55%	29%	53%	8%
4	95%	89%	93%	79%
5	31%	9%	30%	1%
6	95%	89%	93%	79%
7	97%	94%	97%	89%
8	98%	96%	98%	92%
9	96%	90%	94%	81%
10	96%	90%	94%	81%
11	96%	90%	94%	81%
12	63%	38%	61%	15%
13	98%	94%	96%	88%
14	85%	72%	84%	51%
15	98%	94%	96%	88%
16	29%	8%	29%	1%
17	98%	94%	96%	88%
18	98%	94%	96%	88%
<b>OEE Average</b>				<b>57%</b>

## RESULT AND ANALYSIS

The MHPP that had been studied are obtained the average OEE is 57% and it is low category based on JIPM standard. Where there are 38,8% that bad category, 27,7% the normal category and 33,3% only the world class category, as shown in Table V. The result shows that OEE of MHPP Manggih only having near in to perfect class category ie 92%. The reason is MHPP Manggih which a new MHPP that has equipment completely, operating continuously and breakdown time briefly.

**Table-5.** The result OEE of MHPP south Solok distinct.

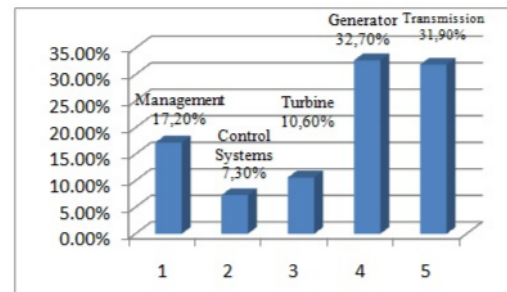
OEE(Overall Equipment Effectiveness) JIPM	% Result of OEE
Perfect : 100%	0 %
World Class : $\geq 85$ %	33%
Normal : $\geq 60\%$ and $< 85\%$	27%
Low : $\geq 40$ and $< 60\%$	38,8%

MHPP Pulakek and MHPP Sungai Bangku have OEE value ie 78% that are the normal category. These MHPP operate continuous, have equipment completely, however the total breakdown time is longer than MHPP Simancung.

While, the other MHPP having a low category because OEE value is lower than 40%. Caused of MHPP have been operated for long time, equipment incompletely, operating time 8 hours every days and also lack management. To increase the OEE value of MHPP can be done with to search main issue of MHPP. MHPP issues can be grouped in to 5 parts, such as; management, control system, turbine, generator and transmission line. Table-6 and Figure-3 are shown the issues of MHPP that studied.

The main damage that often happen in the MHPP is at the generator part ie 32,7%, especially the carbon brush and generator winding. That are caused of over load or over frequency of generator, while the generator

generally don't have an automatic controller equipment. If they have an automatic control equipment which usually use an electronic load controller (ELC). The principle of ELC is when the customer load is decreasing then ELC will throw to dummy load [1]. The impact is that the generator and turbine always operate at full load condition. It can break the generator winding or the bearing of turbine. The transmission line give a contribution to disturb an operation of the MHPP ie 20%. It is caused of a bad construction or struck a fallen tree.

**Figure-3.** The percent broken of MHPP.**Table-6.** The general issues and failure frequency of MHPP.

Issues		Freq uency	Percent damage (%)	
Management	Electric payment	9	7,3 %	17,2 %
	Operator salary	12	9,8 %	
Control System	ELC	-	0 %	7,3 %
	Ballast	-	0 %	
	MCB	3	2,4 %	
	Ampere meter	-	0 %	
	Volt meter	-	0 %	
Turbinee	Hertz meter	6	4,9 %	10,6 %
	Adapter	-	0 %	
	Runner	2	1,6%	
	Guide Vane	2	1,6%	
	Pulley Turbine	3	2,4%	
Generator	Bearing	1	0,8%	32,7 %
	BF Turbine	5	4,09%	
	Generator winding	16	13,11%	
	Brush	22	18,03%	
	BF Generator	-	0%	
Transmission	Pulley Generator	2	1,6 %	31,9 %
	Pole	24	19,6 %	
	Conductor	-	0%	
	V belt	15	12,2 %	



The management of MHPP is the seriously issue because it has strong impact with electricity bills and operator salary. Lack awareness costumer to pay an electricity bills that cause manager of MHPP difficult to pay maintenance cost and operation cost.

#### CONCLUSIONS

Evaluation of 7 MHPP in South Solok districts has been discussed. Method of evaluation that used is OEE. The result are obtained that the average OEE value is 57%. It is low category. The strong issues or problems of MHPP are management and equipment. Management include costumer payment, operator skill and maintenance while equipment issue is the automatic control equipment.

#### ACKNOWLEDGEMENTS

This work has been supported by the ministry of reseach and technology (Ristek dikti) through the desentralisation research fee of grant competition scheme.

#### REFERENCES

- [1] Paish Oliver. Small Hydro Power: Technology and current status, *Journal of Renewable and Sustainable Energy Reviews* 6 (2002) 537–556. UK, 2002.
- [2] Rojes Dahal, etc, Performance of droop based load controller in interconnected micro hydropower plants, 2016 4<sup>th</sup> International Conference on the Development in the in Renewable Energy Technology (ICDRET), January 2016.
- [3] Hidayat and Amita, The Survey Report of Micro Hydro Power Plant (MHPP) in South Solok, West Sumatera, 2016.
- [4] Marzuki Mahdi, West Sumatera have the potency of hydro power 1000 Mega Watt (MW), West Sumatera, 2015.
- [5] Asep Neris Bachtiar and etc, Inventory and Evaluation of MHP in West Sumatra, West Sumatra 2009.
- [6] K. E. Chong, K. C. Ng and G. Goh Improving Overall Equipment Effectiveness (OEE) through integration of Maintenance Failure Mode and Effect Analysis (maintenance-FMEA) in a semiconductor manufacturer: A case study, *Industrial Engineering and Engineering Management (IEEM)*, 2015 IEEE International Conference.
- [7] Cahayahati, Syafii, Hidayatand Dirman. H, Voltage Control System Design for Micro Hydro Power Generation Based On Fuzzy Logic Approach in Order to Improve Voltage Profile of Alternative Power Generation, *Proceedings of The International Graduate on Engineering and Science (IGCES'08)* 23-24 December, 2008.
- [8] Tim Taylor, etc, Open-Ended Evolution: Perspectives from the OEE Workshop in York, MIT Press Journals, Volume: 22, Issue: 3, August 2016.
- [9] Dal. B, Overall Equipment Effectiveness (OEE) as Measure of Operational Improvement, a Practical Analysis: *International Journal of Operations and production Management*, Vol. 20 No.12, 2000.

# artikel pak dayat 6

---

## ORIGINALITY REPORT

---

20%

SIMILARITY INDEX

19%

INTERNET SOURCES

5%

PUBLICATIONS

13%

STUDENT PAPERS

---

## PRIMARY SOURCES

---

1	<a href="https://repository.petra.ac.id">repository.petra.ac.id</a> Internet Source	6%
2	<a href="http://oeo.com">oeo.com</a> Internet Source	3%
3	<a href="http://senkitlu.com">senkitlu.com</a> Internet Source	2%
4	Submitted to University of Mindanao Student Paper	2%
5	<a href="https://repository.uinjkt.ac.id">repository.uinjkt.ac.id</a> Internet Source	1%
6	<a href="http://hdl.handle.net">hdl.handle.net</a> Internet Source	1%
7	Submitted to International Islamic University Malaysia Student Paper	1%
8	<a href="http://cdn.cocodoc.com">cdn.cocodoc.com</a> Internet Source	1%
9	Submitted to King Abdulaziz University Student Paper	1%

---

10 Irfan Sami, Nasim Ullah, S.M. Muyeen, Kuaanan Techato, Md. Shahariar Chowdhury, Jong-Suk. Ro. "Control Methods For Standalone and Grid Connected Micro-Hydro Power Plants with Synthetic Inertia Frequency Support: A Comprehensive Review", IEEE Access, 2020  
Publication 1 %

---

11 [suche.thulb.uni-jena.de](https://suche.thulb.uni-jena.de)  
Internet Source 1 %

---

---

Exclude quotes On Exclude matches < 1%  
Exclude bibliography On