

2023.3407-3415.pdf

by Eni Kamal

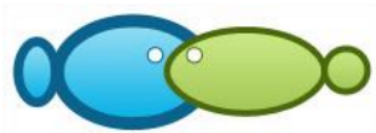
Submission date: 02-Jan-2024 12:39AM (UTC+0700)

Submission ID: 2265998735

File name: 2023.3407-3415.pdf (246K)

Word count: 4707

Character count: 24997



Analysis of water quality in the coastal area of Padang Pariaman Regency, West Sumatra, Indonesia

¹Eni Kamal, ^{2,5}Adnal Yeka, ²Eri Berlian, ³Deni Sarianto, ⁴Amelia Sriwahyuni Lubis

¹ Coastal and Marine Resources, Faculty of Fisheries and Marine Sciences, Bung Hatta University, Padang, Indonesia; ² Environmental Science, School of Graduates, Universitas Negeri Padang, Indonesia; ³ Polytechnic of Marine and Fisheries, Dumai, Indonesia; ⁴ Department of Biology, Faculty of Math and Science, Universitas Andalas, Indonesia; ⁵ Polytechnic AUP, Jakarta, Indonesia. Corresponding author: E. Kamal, ekamal898@bunghatta.ac.id

Abstract. One utilization of coastal areas with adverse effects on coastal environmental quality is shrimp farming. The negative impacts arise primarily from the common practice of clearing mangrove forests to make way for shrimp ponds, often leaving no green zones. The technology of shrimp farming has evolved from traditional to semi-intensive and intensive methods. The advancement of shrimp pond technology has raised concerns in coastal areas, particularly related to the high level of organic waste generated by shrimp farming activities. The objective of this research is to analyze the water quality in the coastal area of Padang Pariaman Regency, West Sumatra, Indonesia. This study was conducted from July 2022 to January 2023 in the coastal areas of Padang Pariaman Regency, West Sumatra, Indonesia involving collection carried out in two seasons, namely summer and rainy season, at six stations with three repetitions. This study employed a survey and observational methods conducted at the research sites for data collection. The obtained data were analyzed descriptively based on the results obtained from both field and laboratory assessments. Based on the analysis of water quality in the coastal area of Padang Pariaman Regency, it can be concluded that offshore, parameters such as total suspended solids (TSS), chemical oxygen demand (COD), and turbidity exceed the tolerance limits for marine biota. According to the phytoplankton evenness index, the area falls into the category of lightly to moderately polluted. Consequently, the phytoplankton condition at each station indicates a fairly uniform distribution of individual species. The analysis of macrozoobenthos diversity index places the area in the moderately polluted category, indicating a relatively even distribution of species.

Key Words: coastal environmental quality, mangrove forests, polluted category, shrimp farming.

Introduction. Indonesia is a tropical nation situated in Southeast Asia, which is currently vigorously engaged in economic development efforts, particularly in the utilization of coastal resources. The planning and management of coastal resources for the purpose of economic advancement must be grounded in the enhancement of sustainably-based resources, ensuring that the process of coastal economic development does not result in environmental degradation (Listiyani et al 2018; Natalia & Pandjaitan 2019). The adverse consequences of inadequate coastal environmental management planning can lead to long-term environmental degradation, necessitating prolonged recovery periods and incurring substantial costs. Hence, it is imperative that in the management of coastal ecosystems, both physical and non-physical damage, such as environmental pollution, are effectively prevented (Garcia & Fonseca 2018; Listiyani et al 2018; Wu & Yang 2018).

The development of the coastal areas in western Sumatra has had adverse environmental impacts, one of which is experienced by the Padang Pariaman Regency in West Sumatra. This is attributed to the fact that Padang Pariaman Regency serves as a buffer zone for waves coming from the open sea. Changes in land cover in the region are a result of uncontrolled urbanization (Long et al 2014; Seto et al 2012). Shrimp farming

utilization of coastal areas has detrimental effects on coastal environmental quality. The predominant negative impacts stem from the widespread practice of clearing mangrove forests to create space for shrimp ponds, frequently resulting in the absence of green zones. An example of unsustainable development can be seen in the northern coast of Java (Pantura), where the previously green mangrove belt has been entirely transformed into shrimp ponds. To preserve the sustainability of coastal areas, the development of coastal regions should not solely focus on developmental activities, including aquaculture, but should also encompass conservation and protected areas. These conservation and protected zones are instrumental for the maintenance and preservation of various ecobiological processes. In terms of physical, chemical, and biological functions, mangrove ecosystems serve to protect the coastline from erosion and sedimentation, act as pollutant absorbers, and function as spawning, feeding, and nursery grounds for various species (Lara et al 2009; Nahuelhual et al 2014).

The total shrimp pond area in Indonesia currently stands at approximately 3,759 hectares, which accounts for 0.43% of the potential 866,550 hectares available across the country. With a substantial area suitable for aquaculture development, the fisheries cultivation sector in Indonesia continues to expand. However, the consequences of ill-conceived and unsustainable plans have led to persistent issues. Mismanagement of land cover changes in the Padang Pariaman Regency is primarily due to a lack of alignment between the spatial planning and the actual utilization within the region, exceeding 25% (Maurinus Roy et al 2017). The transformation of the coastal forest area in Padang Pariaman Regency, which was originally consisted of 40% of the region, has now seen a substantial portion redefined for open shrimp pond areas. Uncontrolled changes in land use can lead to environmental degradation (Imamah et al 2013).

Shrimp farming technology has progressed from traditional to semi-intensive and intensive methods, sparking concerns in coastal areas, especially regarding the substantial organic waste produced in shrimp farming activities. This research aims to analyze water quality in the coastal region of Padang Pariaman Regency, West Sumatra, Indonesia.

17

Material and Method

Research timing and location. This study was conducted from July 2022 to January 2023 in the coastal areas of Padang Pariaman Regency, West Sumatra, Indonesia (Figure 1) involving data collection during two seasons, namely summer and rainy season, at six stations, each with three repetitions, as follows: seawater station, encompassing three sub-stations (A1, A2, and A3); coastal water station, with three sub-stations (B1, B2, and B3); the shrimp pond water station, categorized as intensive, semi-intensive, and traditional, comprising three sub-stations each (C1, C2, and C3); river water station, consisting of three sub-stations (D1, D2, and D3); estuary water station, including three sub-stations (E1, E2, and E3); outlet water station, with three sub-stations (F1, F2, and F3).

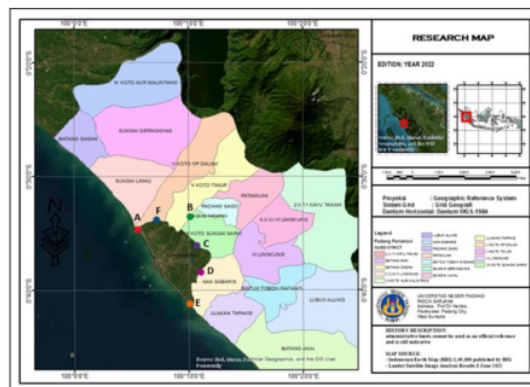


Figure 1. Location of research stations (map generated from Indonesian Earth Map - RBI).

Research methodology. This research utilized survey and observational methods conducted at the research sites to gather data. The positions of each station and sub-station for sample collection were determined using the global positioning system (GPS). Water quality sample collection for analysis was performed four times, including twice during the dry season (September and October) and twice during the wet season (December and January). Water quality analysis consisted of on-site measurements of temperature, turbidity, salinity, dissolved oxygen (DO), pH and total suspended solids (TSS). Laboratory determinations of biological oxygen demand (BOD₅), chemical oxygen demand (COD), total organic content (TOC), nephelometric turbidity (NTU), ammonia (NH₃), nitrate (NO₃-), nitrite (NO₂-), phosphate (PO₄³⁻), copper (Cu), lead (Pb) and zinc (Zn), conducted at the water chemistry laboratory of the State University of Padang.

The measurement of water quality parameters aimed to establish the 'present status' of the water conditions, which can be associated with the level of shrimp pond cultivation productivity. The observed water quality parameters were focused on those that support shrimp farming productivity and describe pollution levels. The observed biological parameters in the water included phytoplankton and macrozoobenthos. To obtain phytoplankton samples, 75 liters of water were filtered using a no. 25 plankton net, reducing the volume to 30 ml, and then preserved with 10 ppm formalin. Identification of phytoplankton species was conducted in the laboratory using microscopes and identification guides (Sachlan 1982; Yamaji 1979). To collect macrozoobenthos, soil probes were taken using an Ekman grab with an opening size of 15 x 15 cm, then placed in a plastic bag and preserved with 10 ppm formalin. Identification of macrozoobenthos types is carried out in the laboratory using a microscope and identification books (Hyman 1955; Sahidin et al 2018)

Data analysis. Descriptive analysis was conducted for the results obtained from both field and laboratory assessments. To assess water quality in terms of the physical and chemical aspects, the field and laboratory data were compared with established seawater quality standards for marine organisms and shrimp cultivation criteria according to Boyd (1990) and Wedemeyer (1996) as cited in Conte (2004), and MENKLH (2003). To evaluate water quality based on biological aspects, specifically phytoplankton and macrozoobenthos as environmental quality indicators, species diversity indices and evenness indices were employed.

Results. The average values of the water quality measurements taken from each observation station in the coastal area of Padang Pariaman Regency, examined in this study, are shown in Table 1.

Table 1

Water quality measurements at each research station

No	Parameter	Station					
		Seawater (A)	Coastal water (B)	Shrimp pond (C)	River water (D)	Estuary water (E)	Outlet water (F)
1	Temperature (°C)	29.3±1.33	29.7±1.14	29.6±0.85	29.7±1.25	29.8±1.00	30.2±0.84
2	Turbidity (%)	74.04±8.37	73.39±2.97	42.21±2.29	50.83±21.97	32.66±9.67	33.21±10.9
3	Salinity (%)	31.18±1.33	31.2±1.56	27.88±1.95	0	8.92±4.22	30.25±1.22
4	Dissolved oxygen (ppm)	6.89±1.08	6.13±0.81	5.60±0.96	4.92±0.78	6.27±1.41	3.43±0.86
5	pH	8.11±0.07	8.07±0.88	8.16±0.19	7.87±0.24	8.05±0.08	8.06±0.12
6	TSS (ppm)	63.9±19.5	125±50.7	283.3±53.3	241.3±39.5	414.5±60.9	316.4±197.8
7	BOD ₅ (ppm)	4.70±2.01	6.51±1.19	7.63±2.14	6.88±2.86	10.78±2.92	7.83±2.18
8	COD (ppm)	72.39±17.50	86.70±22.87	82.61±26.8	86.65±27.23	82.83±15.30	95.37±30.71
9	TOC (ppm)	7.39±17.36	17.08±12.65	51.76±29.83	37.72±29.76	42.12±22.06	37.64±15.11
10	Turbidity (NTU)	5.38±3.81	23.36±9.55	56.9±22.3	26.22±16.14	23.88±19.65	23.44±10.17
11	Ammonia (NH ₃) (ppm)	0.071±0.112	0.128±0.007	0.404±0.148	0.136±0.135	0.225±0.168	0.872±0.506
12	Nitrate (NO ₃) (ppm)	0.064±0.082	0.059±0.058	0.064±0.082	0.069±0.041	0.101±0.051	0.203±0.150
13	Nitrite (NO ₂) (ppm)	0.074±0.82	0.094±0.057	0.228±0.147	0.099±0.065	0.214±0.292	0.0424±0.399
14	Phosphate (PO ₄ ³⁻) (ppm)	0.100±0.082	0.095±0.052	0.008±0.001	0.83±0.051	0.121±0.106	0.132±0.318
15	CU (ppm)	0.013±0.01	0.11±0.10	0.011±0.14	0.017±0.01	0.19±0.013	0.001±0.001
16	Pb (ppm)	0.003±0.003	0.08±0.009	0.001±0.016	0.015±0.013	0.08±0.006	0.03±0.002
17	Zn (ppm)	0.004±0.009	0.013±0.016	0.008±0.009	0.004±0.009	0.013±0.016	0.013±0.016

Based on Table 1, it is evident that several water quality parameters in the coastal area of Padang Pariaman Regency have exceeded the allowable standards for marine life, which include TSS (80 ppm), COD (80 ppm), and turbidity (30 NTU). At the coastal station, water quality parameters that exceed the permissible standards for marine life are TSS (125 ± 50.7 ppm) and COD (86.70 ± 22.87 mg/l). The high TSS levels at the coastal station are likely influenced by the discharge of waste from land-based shrimp farming activities. This is supported by the elevated TSS values at the intensive shrimp pond station, which are 283.3 ± 53.3 ppm, and at the outlet station, which are 316.4 ± 197.8 mg/l. Similarly, the elevated COD at the coastal station, especially, is presumed to originate from land-based agricultural activities that contain chemicals such as pesticides and domestic wastewater from residential areas. This is evident in the high COD values at the river and estuary stations, which are 86.56 ± 27.23 ppm and 82.83 ± 15.30 ppm, respectively, exceeding the permissible standards for marine life. These stations also serve as discharge points for agricultural and residential wastewater before entering the coastal area.

Based on the results of phytoplankton identification, it is evident that there are at least five classes of phytoplankton present in the coastal waters of Padang Pariaman Regency, namely Bacillariophyceae, Cyanophyceae, Dinophyceae, Chlorophyceae, and Euglenophyceae. The data showing the identification of phytoplankton species at different stations and sub-stations are presented in Table 2. The composition and abundance of phytoplankton species in the coastal waters of Padang Pariaman at different stations (seawater, coastal water, shrimp pond water, outlet water, and estuary water) can be observed in Table 2.

Table 2
Phytoplankton composition and abundance (ind/L) in the coastal waters of Padang Pariaman Regency

Station	Species composition/abundance (ind/L)				
	Bacillariophyceae	Chlorophyceae	Cyanophyceae	Dinophyceae	Euglenophyceae
Seawater	20583	6481	3488	1184	0
Coastal	54848	7996	3538	2606	600
Shrimp pond	86876	1440	2308	4144	0
Outlet	6078	2790	1308	2728	248
Estuary	6192	1908	10854	3016	712
Total	174577	20615	21496	13678	1560
%	75.3	8.9	9.3	5.9	0.7

Based on the identification of macrozoobenthos, it is evident that there are at least four classes of macrozoobenthos present in the coastal waters of Padang Pariaman Regency, which include the classes Gastropoda, Pelecypoda, Polychaeta, and Crustacea. Several species from the Gastropoda class, such as *Cerithidea* sp., *Terebralia* sp., and *Nerita* sp. were identified. Pelecypoda class species included *Modiolus* sp. and *Lithophaga* sp. Polychaeta class species like *Nereis* sp. and *Capitella* sp. were identified. From the Crustacea class, species such as *Balanus* sp., have been identified. The analysis of species evenness index (E) at each station ranged between 0.86 to 1.0, with an average value of 0.96. When E values approach 0, it indicates an uneven distribution of individuals among species. Based on the analysis of macrozoobenthos diversity index (H') at each observation station, a relatively even distribution of species is shown. Data regarding the identification of macrozoobenthos species at the observation stations are presented in Table 3.

Table 3
Composition of macrozoobenthos species and abundance (ind/m²) in the coastal waters of Padang Pariaman Regency

Species composition/abundance (ind/m ²)	Station		
	Seawater	Coastal water	Estuary water
Phylum Mollusca			
<i>Conus</i> sp.	0.00	14.67	0.00
<i>Cerithidea</i> sp.	0.00	14.67	88.00
<i>Terebralia</i> sp.	44.00	0.00	0.00
<i>Terebellum</i> sp.	44.00	7.33	0.00
<i>Littorina</i> sp.	14.67	14.67	0.00
<i>Melanoides</i> sp.	0.00	0.00	44.00
<i>Nassarius</i> sp.	14.67	7.33	0.00
<i>Nerita</i> sp.	29.33	7.33	14.67
<i>Mitra</i> sp.	14.67	7.33	0.00
Class Pelecypoda			
<i>Modiolus</i> sp.	14.67	0.00	0.00
<i>Lithophaga</i> sp.	0.00	7.33	0.00
<i>Perna</i> sp.	14.67	14.67	0.00
<i>Tellina</i> sp.	0.00	22.00	0.00
<i>Pitar striatum</i>	0.00	0.00	14.67
Class Polychaeta			
<i>Sabella</i> sp.	0.00	14.67	14.67
<i>Nereis</i> sp.	0.00	36.67	14.67
Class Crustacea			
<i>Balanus</i> sp.	0.00	0.00	14.67
<i>Leptognatha</i> sp.	14.67	8.80	0.00

Discussion. The high TSS in intensive shrimp farming areas can be attributed to the presence of uneaten artificial feed, such as leftover feed and metabolic byproducts in the form of waste that is released into the water (Boyd 1999). It should be noted that in intensive aquaculture technology, the nutritional needs of the cultivated animals depend entirely on artificial feed. Thus, if a significant amount of the artificial feed can remain unused, and it can be a primary factor contributing to the high organic matter content in the ponds, subsequently elevating TSS levels in the water. Supporting this notion, another parameter is the high turbidity of water in the intensive pond stations (56.9 ± 22.1). According to studies by Paena et al (2020), Pantjara et al (2010) and Syah et al (2014), there is a positive relationship between suspended particle matter and water turbidity in a water body, meaning that the higher the suspended particle matter concentration, the higher the turbidity.

Phytoplankton, tiny floating plant organisms in water, play a pivotal role as primary organisms in the food chain and serve as a biological parameter for assessing water fertility (Iswanto et al 2015; Sihombing et al 2015). Based on Table 2, it can be observed that the Bacillariophyceae type constitutes 73.5% of the composition, Chlorophyceae accounts for 8.9%, Cyanophyceae for 9.3%, while Dinophyceae and Euglenophyceae contribute 5.9% and 0.7% respectively. When considering the different stations, it is evident that Bacillariophyceae dominates at the seawater, coastal, shrimp pond, and outlet stations. The high presence of Bacillariophyceae is likely influenced by the relatively high salinity levels at each station, ranging from 25 to 34 ppm. This is supported by the estuary station, where the salinity ranges from 5 to 18 ppm, which is primarily dominated by Cyanophyceae. As observed by Afif et al (2014), phytoplankton living in salinity ranges above 20 ppm are predominantly Bacillariophyceae, and salinity levels are also influenced by the competition with other phytoplankton species.

Some species of Bacillariophyceae (diatoms), such as *Chaetoceros* spp., *Nitzschia* spp., *Rhizosolenia* spp., and *Coccolithus* spp., are noteworthy for their high frequency of appearance and abundance. *Chaetoceros* spp. and *Nitzschia* spp. are particularly favored

by shrimp. Commonly occurring Chlorophyceae species include *Oocystis* spp., *Coelastrum* spp., and *Ulothrix* spp. Among Cyanophyceae, species like *Spirulina* spp., *Oscillatoria* spp., and *Calothrix* spp. have been identified. From the Dinophyceae class, species like *Noctiluca* sp. and *Ceratium* spp. are frequently observed, and for the Euglenophyceae class, *Euglena* spp. is a common find.

To assess the level of pollution in aquatic environments, the qualitative and quantitative analysis of macrozoobenthos is often considered essential to complement the findings from physical and chemical analyses. In certain instances, the results of physical and chemical water analyses may be less precise and subject to variations influenced by transient conditions. In highly dynamic marine environments, biological analyses such as phytoplankton and macrozoobenthos can offer a clearer picture of the impact of pollutants on the community structure of organisms residing in the water. Additionally, benthic organisms like macrozoobenthos, due to their slow mobility, serve as indicators of the disappearance of specific species typically found in a particular environment, providing insights into environmental changes or indications of pollution in an aquatic environment. The calculated diversity index (H') across all stations fall within the range of 1.01 to 2.12. The lowest diversity index value is observed at the estuary station, while the highest is recorded at the seawater station. According to Odum and Barrett (1971), diversity values between 1 and 3 fall into the moderate category.

According to Lee et al (1978) as cited in Drira et al (2014), evenness index values between 1.0 and 2.0 indicate light pollution, and values exceeding 2.0 categorize the observed area in Padang Pariaman Regency as moderately even, suggesting that it is lightly to moderately polluted. Furthermore, the species evenness index (E) across all observation stations ranges from 0.5 to 1.0, indicating a relatively even distribution of individual species. The observations of macrozoobenthos at each station revealed a very low number of species, typically ranging from 1 to 5 species, with an average of 60 individuals/m². This situation indicates the dominance of certain macrozoobenthos species. This aligns with the findings of Indrawan et al (2007) and Nurcahyo (2018), who propose that when there is a sharp decrease in organism diversity within an environment to the extent that only specific dominant organisms remain, the environment has likely experienced pollution-induced stress, and these dominant populations are considered pollution indicators.

The analysis of macrozoobenthos diversity index at each observation station falls within the range of 0.64 to 1.70, with an average value of 1.06. According to Lee et al (1978), as cited in Drira et al (2014), a diversity index value between 1.0 and 1.5 is categorized as moderately polluted.

Conclusions. Analysis of water quality in the coastal area of Padang Pariaman Regency, shows that at the offshore station, parameters such as TSS, COD, and turbidity exceed the tolerance limits for marine biota. Based on the phytoplankton evenness index, this area falls into the category of lightly to moderately polluted. The phytoplankton condition at each station displays a fairly uniform distribution of species. Macrozoobenthos diversity index places the area in the moderately polluted category, with a relatively even distribution of species.

Conflict of interest. The authors declare that there is no conflict of interest.

References

- Afif A., Widianingsih W., Hartati R., 2014 [Composition and abundance of plankton in the waters of Gusung Island, Selayar Islands, South Sulawesi]. *Journal of Marine Research* 3(3):324–331 [In Indonesian].
- Boyd C. E., 1990 Water quality in ponds for aquaculture. Alabama Agricultural Experiment Station, Auburn University. 482 pp.
- Boyd C. E., 1999 Management of shrimp ponds to reduce the eutrophication potential of effluents. *The Advocate* December 1999:12–13.

- Conte F. S., 2004 Stress and the welfare of cultured fish. *Applied Animal Behavior Science* 86(3-4):205-223.
- Drira Z., Elloumi J., Guerhazi W., Hassen M.B., Hamza A., Ayadi H., 2014 Seasonal changes on phytoplanktonic diatom communities along an inshore-offshore gradient in the Gulf of Gabes (Tunisia). *Acta Ecologica Sinica* 34(1):34-43.
- Garcia L. C., Fonseca A., 2018 The use of administrative sanctions to prevent environmental damage in impact assessment follow-ups. *Journal of Environmental Management* 219:46-55.
- Hyman L. H., 1955 *The Invertebrates. IV. Echinodermata. Class Holothuroidea, the coelomate Vol IV.* Mac Graw-Hill Book. Company, New York. 212-224 p.
- Imamah L., Hartoyo S., Syaukat Y., 2013 [Total Tambak business productivity factors related to Tambak pollution in Karawang district]. *Agribusiness Journal* 7(1):35-58 [In Indonesian].
- Indrawan M., Primack R. B., Supriatna J., 2007 [Conservation biology: revised edition]. Yayasan Pustaka Obor Indonesia [In Indonesian].
- Iswanto C. Y., Hutabarat S., Purnomo P. W., 2015 [Analysis of water fertility based on plankton, nitrate and phosphate diversity in the Jali River and Slope River in Keburuhan Village, Purworejo]. *Management of Aquatic Resources Journal (MAQUARES)* 4(3):84-90 [In Indonesian].
- Lara A., Little C., Urrutia R., McPhee J., Álvarez-Garretón C., Oyarzún C., Soto D., Donoso P., Nahuelhual L., Pino M., 2009 Assessment of ecosystem services as an opportunity for the conservation and management of native forests in Chile. *Forest Ecology and Management* 258(4):415-424.
- Lee C. D., Wang S. B., Kuo C. L., 1978 Benthic macroinvertebrate and fish as biological indicators of water quality, with reference of community diversity index. Bangkok. International Conference on Water Pollution Control in Development Countries. 21-25.02.1978.
- Listiyani N., Hayat M. A., Mandala S., 2018 [Normalization of supervision of environmental permits in preventing pollution and environmental damage in the exploitation of natural resources]. *Jurnal Media Hukum* 25(2):217-227 [In Indonesian].
- Long H., Liu Y., Hou X., Li T., Li Y., 2014 Effects of land use transitions due to rapid urbanization on ecosystem services: Implications for urban planning in the new developing area of China. *Habitat International* 44:536-544.
- Maurinus Roy A. C., Rusdian O., Ichwandi I., 2017 [Dynamics of changes and space utilization policies in Bogor Regency, West Java Province]. *Journal of Environmental Engineering and Waste Management* 2(2):60-68 [In Indonesian].
- Nahuelhual L., Carmona A., Aguayo M., Echeverria C., 2014 Land use change and ecosystem services provision: A case study of recreation and ecotourism opportunities in southern Chile. *Landscape Ecology* 29(2):329-344.
- Natalia G., Pandjaitan N. H., 2019 [Analysis of water storage capacity in Cibinong District, Bogor Regency]. *Jurnal Teknik Sipil Dan Lingkungan* 4(2):115-124 [In Indonesian].
- Nurcahyo W., 2018 [Parasites in fish]. UGM Press. 165 pp. [In Indonesian].
- Odum E. P., Barrett G. W., 1971 *Fundamentals of ecology.* Fifth Edition. 624 pp.
- Paena M., Syamsuddin R., Tandipayuk H., 2020 [Estimation of organic waste loads from superintensive shrimp ponds discarded in the waters of Labuange Bay]. *Jurnal Ilmu Dan Teknologi Kelautan Tropis* 12(2):507-516 [In Indonesian].
- Pantjara B., Nawang A., Usman U., Syah R., 2010 [Biofloc system vanamei shrimp cultivation]. *Media Akuakultur* 5(2):93-97 [In Indonesian].
- Sachlan M., 1982 [Planktonology]. Correspondence Course Centre. Direktorat Jenderal Perikanan, Departemen Pertanian, Jakarta. 141 pp. [In Indonesian].
- Sahidin A., Zahidah., Herawati H., Wardiatno Y., Setyobudiandi I., Partasasmita R., 2018 Macrozoobenthos as bioindicator of ecological status in Tanjung Pasir Coastal, Tangerang District, Banten Province, Indonesia. *Biodiversitas* 19(3):1123-1129.

- Seto K. C., Güneralp B., Hutyrá L. R., 2012 Global forecasts of urban expansion to 2030 and direct impacts on biodiversity and carbon pools. *Proceedings of the National Academy of Sciences* 109(40):16083–16088. <https://doi.org/10.1073/pnas.1211658109>
- Sihombing I. N., Hutabarat S., Sulardiono B., 2015 [Study of water fertility based on nutrients (N, P) and phytoplankton in the Tulung Demak River]. *Management of Aquatic Resources Journal (MAQUARES)* 4(4):119–127 [In Indonesian].
- Syah R., Makmur M., Undu M. C., 2014 [Estimation of feed nutrient waste load and carrying capacity of coastal areas for superintensive vanamei shrimp ponds]. *Jurnal Riset Akuakultur* 9(3):439–448 [In Indonesian].
- Wedemeyer G. A., 1996 *Physiology of fish in intensive culture systems*. Springer Science & Business Media. 232 pp.
- Wu B., Yang Z., 2018 The impact of moral identity on consumers' green consumption tendency: The role of perceived responsibility for environmental damage. *Journal of Environmental Psychology* 59:74–84.
- Yamaji I. E., 1979 *Illustration of the marine plankton of Japan*. Hoikusha Publishing. Co. Ltd. Osaka. Japan. 537 pp.
- *** Minister of the Environment Regulation (MENKLH), 2003 Minister of the Environment Regulation Number 115 concerning Guidelines for Determining Water Quality Status. www.luk.staff.ugm.ac.id [Last accessed on 22 December 2023].

Received: 16 October 2023. Accepted: 20 November 2023. Published online: 30 December 2023.

Authors:

Eni Kamal, Coastal and Marine Resources, Faculty of Fisheries and Marine Sciences, Bung Hatta University, Padang, Indonesia, e-mail: ekamal898@bunghatta.ac.id

Adnal Yeka, Environmental Science, School of Graduate, Universitas Negeri Padang, Indonesia, e-mail: adnal.yeka@kkip.go.id

Eri Berlian, Environmental Science, School of Graduate, Universitas Negeri Padang, Indonesia, e-mail: e.berlian@fik.unp.ac.id

Deni Sarianto, Polytechnic of Marine and Fisheries, Dumai, Indonesia, e-mail: denisarianto@gmail.com

Amelia Sriwahyuni Lubis, Department of Biology, Faculty of Math and Science, Andalas University, Kampus Unand Limau Manis, Padang, 25163, West Sumatera, Indonesia, e-mail: amelialubis6@gmail.com

This is an open-access article distributed under the terms of the Creative Commons Attribution License, which permits unrestricted use, distribution, and reproduction in any medium, provided the original author and source are credited.

How to cite this article:

Kamal E., Yeka A., Berlian E., Sarianto D., Lubis A. S., 2023 Analysis of water quality in the coastal area of Padang Pariaman Regency, West Sumatra, Indonesia. *AAFL Bioflux* 16(6):3407-3415.

ORIGINALITY REPORT

10%

SIMILARITY INDEX

6%

INTERNET SOURCES

6%

PUBLICATIONS

3%

STUDENT PAPERS

PRIMARY SOURCES

1	Mustika Firdaus, Sulistiono, Bambang Widigdo. "Brackishwater pond development: present status and problems in the Padang Pariaman Regency of West Sumatera, Indonesia", E3S Web of Conferences, 2021 Publication	3%
2	Submitted to Universitas Riau Student Paper	2%
3	M Firdaus, Sulistiono, B Widigdo. "Characteristics of the aquatic environment as a basis for brackish water pond development in the Padang Pariaman regency area, Indonesia", IOP Conference Series: Earth and Environmental Science, 2023 Publication	1%
4	www.researchgate.net Internet Source	1%
5	ijpa.tums.ac.ir Internet Source	<1%
6	Submitted to Universitas Bung Hatta Student Paper	<1%

7	repository.umi.ac.id Internet Source	<1 %
8	Suardi Suardi, Hidayat Suryanto Suwoyo. " Application of organic fertilizer originated from pond waste for white shrimp () grow-out in the extensive system ", BIO Web of Conferences, 2023 Publication	<1 %
9	docs.bvsalud.org Internet Source	<1 %
10	journals.pan.pl Internet Source	<1 %
11	www.jurnal.unsyiah.ac.id Internet Source	<1 %
12	www.smujo.id Internet Source	<1 %
13	E. Y. Herawati, A. Darmawan, M. Azkiya. "Community Structure And Phytoplankton Abundance In Different Estuary In Coast Waters Lekok Pasuruan East Java", IOP Conference Series: Earth and Environmental Science, 2021 Publication	<1 %
14	Subhodeep Sarker, Somashekhar R. Desai, Xivanand N. Verlecar, Munmun Saha Sarker, A. Sarkar. "Mercury-induced genotoxicity in	<1 %

marine diatom (Chaetoceros tenuissimus)",
Environmental Science and Pollution
Research, 2015

Publication

15 www.aes.bioflux.com.ro <1 %
Internet Source

16 d-nb.info <1 %
Internet Source

17 repository.ub.ac.id <1 %
Internet Source

18 submissions2.mirasmart.com <1 %
Internet Source

19 www.ipbes.net <1 %
Internet Source

20 Lassiter, A.M.. "Phytoplankton assemblages in
the CoOP-WEST coastal upwelling area",
Deep-Sea Research Part II, 200612 <1 %
Publication

Exclude quotes On

Exclude matches < 3 words

Exclude bibliography On