

Effect of initial tangential intensity on the fluid dynamic characteristics in tangential burner

Pasymi^{1,2}, Yogi Wibisono Budhi¹, and Yazid Bindar^{1*}

¹Department of Chemical Engineering, Faculty of Industrial Technology Institut Teknologi Bandung, Bandung, Indonesia

²Department of Chemical Engineering, Faculty of Industrial Technology Bung Hatta University, Padang, Indonesia

Abstract. Swirl turbulent flow is intensively used by the industrial equipments such as combustion, separation and heat transfer equipments. The fluid dynamic characteristics of this flow are influenced by the chamber's geometries and the operating conditions. One of the important operating condition variables which greatly affects the fluid dynamic characteristics is initial tangential intensity (I_{TI}) or often known as swirl number. This study is aimed to quantify the effect of the initial tangential intensity on the fluid dynamic characteristics in a tangential burner. The method of the study is based on the computational fluid dynamic simulation under the Ansys Fluent CFD engine. The fluid dynamic characteristics were modeled using the standard $k-\varepsilon$ turbulent model. The simulation results exhibited that the three dimensional flow structure in a tangential burner is dominated by the tangential flow. The fluid dynamic simulations also showed that the effect of the I_{TI} on the mean turbulence intensity and the mean residence time begin to be significant at the I_{TI} values ≥ 1.1 and ≥ 4.5 respectively, while at low I_{TI} values, its effects on both variables are insignificant. The lowest pressure drop obtained in this study was found on the burner with I_{TI} value of 3.2.

1 Introduction

A tangential burner is a burner that has two inflow orientations, namely axial orientation and tangential orientation. The tangential inflow orientation can be created through a tangential injection or a swirler. This burner type has several advantages over the axial burners. These advantages include increasing the degree of the mixing, extending the residence time of fuel in the burner and assisting the ash separation.

Initially, the development of this burner was intended to reduce coal ash problems in the boiler furnace. But now, a tangential burner is developed for the combustion of other solid fuels, such as biomass fuels. The tangential burners for a solid biomass fuel were developed previously by the names of the McConnell-48 burner [1], the VTS burner [2], and the baggase burner [3].

The performances of a tangential burner are greatly influenced by the burner geometry factors, and the operating conditions. The geometry factors include the shape and the size of the chamber, and the shape and the size the inlet and the outlet. The operating conditions cover the variables of the total mass flow rate and the initial tangential intensity (I_{TI}).

The initial tangential intensity is defined as the ratio between the mass flux entering the tangential inlet to the mass flux entering the burner cylinder.

Mathematically, the initial tangential intensity of the flow in the tangential burner is evaluated using the following formula,

$$I_{TR} = (A_c/A_t)\dot{m}_t^2/(\dot{m}_t + \dot{m}_c)^2 \quad (1)$$

The variables A_t and A_c are the cross-sectional area of the tangential inlet and burner cylinder, respectively. While the variables \dot{m}_t dan \dot{m}_c are the mass flow rate through the tangential inlet and the mass flow rate through the burner cylinder [4].

This study is aimed to quantify the effect of the initial tangential intensity to the flow characteristics in a tangential burner. The flow characteristics quantified here are the residence time, the turbulence intensity, the flow structure and the pressure drop. All these flow characteristics are well quantified three dimensionally by CFD display techniques.

1.1 Swirl flow

The swirl turbulent flow is dominated by the tangential velocity component. This typical turbulent flow has many uses in the industrial practices. Therefore, the studies related to this topic obtain great attention from researchers. Both, experimental and numerical methods are commonly used.

Bourgouin [5] conducted the study experimentally and numerically about the influence

* Corresponding author at yazid@che.itb.ac.id

of a swirler geometry on the flow structures inside a gas turbine chamber using the LES approach. They claimed that their predictions agree with the corresponding experimental data. They stated that the flow structures and the precessing vortex core (PVC) frequency are extremely sensitive to the swirler geometry and have a strong effect on the combustion performances [5].

A simulation study on the ability of Unsteady Reynolds Averaged Navier-Stokes (URANS) approach to predict the fluid dynamics inside the swirl burner was reported by Vazquez [6]. He used both $k-\varepsilon$ and RSM turbulent models. He reported that both models can predict the values close to the experimental data. For an atmospheric swirl burner, the predictions with $k-\varepsilon$ model for the axial and the tangential velocity are better than the RSM model [6].

Escue and Cui [7] investigated the performance of several RANS turbulent models in modeling the developing swirl turbulent flow inside a straight pipe. They reported that although RANS models do not adequate in simulating the developing swirl turbulent flow, but they exhibit a better agreement with the experimental velocity profiles, especially for the low swirl flows. The RSM model even gave an appropriate prediction for higher swirl flows [7].

Another study concerning the flow structure and the combustion performances inside a swirl burner was conducted by Nemoda [8]. They used $k-\varepsilon$ turbulent model. Their simulation results satisfactorily agreed with the experimental data. They stated that the flow structures in the swirl burner are influenced by the swirl number or I_{Π} [8].

1.2 Fluid dynamics characteristics

1.2.1 Turbulence intensity

The degree of the mixing is one of the variables that affects the combustion performances. The degree of the mixing inside a chamber can be indicated by the turbulence intensity. It can be determined experimentally or numerically.

According to Nemoda et al. (2005), the flow structure in a burner is influenced by the swirl number. At a high swirl number ($S \geq 2.48$), the recirculation flow structure exists and tends to increase the chemical conversion and the flame stability [8]. In line with the Nemoda results, Li et al. [9] reveals that the turbulence intensity value influences the combustion process and the NO_x formation in a burner [9].

1.2.2 Residence time

The particles movement in the burner can be considered being similar to the air movement. Therefore, the air fluid dynamic in the burner can be used to estimate the pseudo particle residence time.

The residence time of the particles inside the burner is always associated with the particle burning time and the combustion degree that is expected to occur in the burner, whether a partial combustion or a complete combustion. The particle burning time is influenced by the degree of the mixing, the particle shape and size, the oxygen concentration and the temperature. Normally, the greater the particle burning time, the longer the residence time is required.

Momeni et al. [10] conducted the experiments for a combustion process of a single biomass particle in a combustion chamber. Their results showed that the particle combustion process is influenced by the shape and the size of the particle (the particle aspect ratio), the oxygen concentration and the temperature. For a biomass particle with the particle aspect ratio 4, the oxygen concentration 20%, and the burner temperature 1200 °C, the burnout time of the particle was found at 5.4 seconds, while for the burner temperature 1600 °C, the burnout time was found at 3.6 seconds [10].

1.2.3 Pressure drop

A pressure drop across the separation and the combustion chamber is directly related to the operating cost. The higher the pressure drop, the higher the cost to drive the carrier fluid across the chamber is. The swirl flow is known to increase the pressure drop in the chamber.

Aydin et. al [11] investigated experimentally the effect of the swirler geometry, the Reynolds number and the cylinder ratio on the pressure drop and the heat transfer performance. They stated that all of the above variables have the effects on the pressure drop and the heat transfer. Unlike the effect of the swirler geometry and the cylinder ratio on the pressure drop which can be ignored, the effect of the Reynolds number on the pressure drop is so significant [11].

1.3 Turbulent model

There are three advanced turbulent approaches often used to solve the fluid dynamic problems. They are Direct Numerical Solution (DNS), Large Eddy Simulation (LES) and RANS-based modeling. The RANS-based modeling is the most frequently used in solving various turbulent flow problems.

In this approach, the turbulent conservation equations are derived by decomposing the Navier-Stokes equations. All decomposed terms are obtained from the Reynolds decomposition method. The decomposed equations are often known as the Reynolds Average Navier-Stokes (RANS) equations.

There are several RANS turbulent models. They are Spalart Allmaras as one equation turbulent model, $k-\varepsilon$ and $k-\omega$ turbulent models as two equation turbulent model and Reynolds Stress

Model (RSM). Each of the above model has its own variants. The $k - \varepsilon$ model has the variants of the standard $k - \varepsilon$, the RNG $k - \varepsilon$, the Realizable $k - \varepsilon$ and the Low $N_{Re} k - \varepsilon$.

The Boussinesq hypothesis is used to close the RANS equations. It is done by introducing the turbulence viscosity, μ_t . The RANS equations are written as follows,

$$\frac{\partial \bar{u}_x}{\partial x} + \frac{\partial \bar{u}_y}{\partial y} + \frac{\partial \bar{u}_z}{\partial z} = 0 \tag{2}$$

$$\rho \frac{\partial \bar{u}_x}{\partial t} + \rho \bar{u}_x \frac{\partial \bar{u}_x}{\partial x} + \rho \bar{u}_y \frac{\partial \bar{u}_x}{\partial y} + \rho \bar{u}_z \frac{\partial \bar{u}_x}{\partial z} = -\frac{\partial \bar{p}}{\partial x} + \frac{\partial}{\partial x} \left(\mu_{eff} \frac{\partial \bar{u}_x}{\partial x} \right) + \frac{\partial}{\partial y} \left(\mu_{eff} \frac{\partial \bar{u}_x}{\partial y} \right) + \frac{\partial}{\partial z} \left(\mu_{eff} \frac{\partial \bar{u}_x}{\partial z} \right) + \tag{3}$$

$$\rho \frac{\partial \bar{u}_y}{\partial t} + \rho \bar{u}_x \frac{\partial \bar{u}_y}{\partial x} + \rho \bar{u}_y \frac{\partial \bar{u}_y}{\partial y} + \rho \bar{u}_z \frac{\partial \bar{u}_y}{\partial z} = -\frac{\partial \bar{p}}{\partial y} + \frac{\partial}{\partial x} \left(\mu_{eff} \frac{\partial \bar{u}_y}{\partial x} \right) + \frac{\partial}{\partial y} \left(\mu_{eff} \frac{\partial \bar{u}_y}{\partial y} \right) + \frac{\partial}{\partial z} \left(\mu_{eff} \frac{\partial \bar{u}_y}{\partial z} \right) + \tag{4}$$

$$\rho g_y$$

$$\rho \frac{\partial \bar{u}_z}{\partial t} + \rho \bar{u}_x \frac{\partial \bar{u}_z}{\partial x} + \rho \bar{u}_y \frac{\partial \bar{u}_z}{\partial y} + \rho \bar{u}_z \frac{\partial \bar{u}_z}{\partial z} = -\frac{\partial \bar{p}}{\partial z} + \frac{\partial}{\partial x} \left(\mu_{eff} \frac{\partial \bar{u}_z}{\partial x} \right) + \frac{\partial}{\partial y} \left(\mu_{eff} \frac{\partial \bar{u}_z}{\partial y} \right) + \frac{\partial}{\partial z} \left(\mu_{eff} \frac{\partial \bar{u}_z}{\partial z} \right) + \tag{5}$$

$$\rho g_z$$

The standard $k-\varepsilon$ turbulent model is supported by modeling μ_t semi-empirically. The formulation of μ_t variable is given by,

$$\mu_t = C_\mu \rho \frac{k^2}{\varepsilon} \tag{6}$$

k is the specific turbulent kinetic energy. ε is the dissipation rate of the turbulent kinetic energy. C_μ is the empirical constant.

Two new dependent variables, namely the k and ε variables are modeled by using the conservation equation approach. The conservation equations for these two turbulent variables are expressed as,

$$\rho \frac{\partial k}{\partial t} + \rho \bar{u}_x \frac{\partial k}{\partial x} + \rho \bar{u}_y \frac{\partial k}{\partial y} + \rho \bar{u}_z \frac{\partial k}{\partial z} = \frac{\partial}{\partial x} \left(\frac{\mu_{eff}}{\sigma_k} \frac{\partial k}{\partial x} \right) + \frac{\partial}{\partial y} \left(\frac{\mu_{eff}}{\sigma_k} \frac{\partial k}{\partial y} \right) + \frac{\partial}{\partial z} \left(\frac{\mu_{eff}}{\sigma_k} \frac{\partial k}{\partial z} \right) + P_k - \rho \varepsilon \tag{7}$$

$$\rho \frac{\partial \varepsilon}{\partial t} + \rho \bar{u}_x \frac{\partial \varepsilon}{\partial x} + \rho \bar{u}_y \frac{\partial \varepsilon}{\partial y} + \rho \bar{u}_z \frac{\partial \varepsilon}{\partial z} = \frac{\partial}{\partial x} \left(\frac{\mu_{eff}}{\sigma_\varepsilon} \frac{\partial \varepsilon}{\partial x} \right) + \frac{\partial}{\partial y} \left(\frac{\mu_{eff}}{\sigma_\varepsilon} \frac{\partial \varepsilon}{\partial y} \right) + \frac{\partial}{\partial z} \left(\frac{\mu_{eff}}{\sigma_\varepsilon} \frac{\partial \varepsilon}{\partial z} \right) + C_{\varepsilon 1} \frac{\varepsilon}{k} P_k - C_{\varepsilon 2}^* \rho \frac{\varepsilon^2}{k} \tag{8}$$

There are six dependent variables contained in the $k - \varepsilon$ turbulent model, those are p, u_x, u_y, u_z, k and ε .

Variables P_k and $C_{\varepsilon 2}^*$ are the turbulent kinetic energy production rate and the constant. These can be found in the literature [12]. The constant values of the equations above are as follows $C_\mu = 0.085$, $\sigma_k = 0.7194$, $\sigma_\varepsilon = 0.7194$, $C_{\varepsilon 1} = 1.42$ and $C_{\varepsilon 2} = 1.68$ [12].

These conservation equations can be solved simultaneously using the numerical method. All the numerical procedures for solving all equations are blended in a CFD code.

2 Research methodology

This research was conducted using the numerical simulation method with Ansys Fluent as CFD engine. This research is started by designing the burner geometry which includes determining the shape and the size of the burner. The actual designed burner geometry is then built and meshed three dimensionally in the CFD engine.

The CFD simulation is initiated with the problem definitions by assigning all boundary conditions of the specified problem to the meshed boundaries. The next stage is to choose the appropriate turbulent model to simulate the fluid dynamic characteristics in the designed tangential burner. CFD parametric explorations are conducted then to assure that the used CFD parameters produce consistent results. The stage is continued by quantifying the effect of the initial tangential intensity on the fluid dynamic characteristics in the tangential burner using the selected turbulent model.

2.1 Burner geometry

The designed tangential burner in this study has single tangential injection. The tangential injection is installed at the bottom of the frustum that connects the axial inlet and the cylindrical body. The frustum length is about 500 mm. The geometry of the tangential burner is shown in Fig. 1.

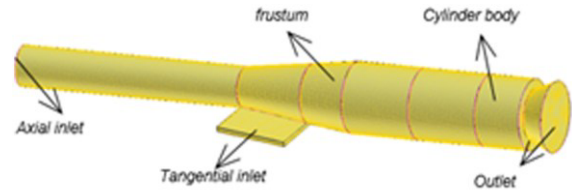


Fig. 1. The geometry of designed tangential burner.

The cylinder diameter is 300 mm with the length of 900 mm. The axial inlet is 172 mm in diameter and 1000 mm in length. The tangential inlet width is 300 mm and the tangential inlet length is 300 mm. The burner inlet aspect ratio is 14.

2.2 Boundary Conditions

The burner has two inlet, namely axial and tangential inlet, and single outlet. The burner is operated at the atmospheric pressure and isothermal condition. The axial and tangential inlet velocities are varied for several I_{TI} values. The variations of I_{TI} values are 0.4, 0.7, 1.1, 1.9, 3.2, 4.5, 6.8, and 10.

This three dimensional fluid flow simulation is set with the stationary walls with no slip condition. The fluid flows near the walls are governed by the standard wall function.

2.3 Model selection

In this study, the simulations are intended for the design purpose where a very high accuracy of predictions does not always become a primary concern. The three dimensional CFD works with complex physical phenomena require very large computational efforts and need a large computer memory. Such this computer facility is very expensive and rarely available for many engineering design companies. To avoid the problems, it is required to use a proper and robust turbulent model and an inexpensive computational technique for the engineering design purposes.

The DNS approach in solving the turbulent flow produces very high accuracy predictions. Therefore the DNS is intended for the validation purpose rather than for the design purpose. The DNS needs a huge computational effort and an excessive computing time. The LES turbulent model still require a very high computational effort and longer computing time although it has a higher accuracy prediction than the RANS turbulent models.

The RANS turbulent models are able to predict the turbulent flow behaviors appropriately and require a relatively low computational effort. The success of RANS turbulence model in modeling the tangential flow has been widely reported by many authors [6], [8]. But, there is no turbulence model that can work well for all geometries and operating conditions. Therefore, an suitable model for an encountered problem must be chosen carefully.

In addition, the current computers and CFD techniques are well established and mature. These allow the CFD simulations to be carried out using an inexpensive computer facility like a small computing server or a simple Personal Computer (PC) or even a laptop computer with acceptable results. Based on the above considerations, the turbulent models used in this study are the RANS-based turbulent models.

2.4 Experimental variables

The numerical quantification on the effect of the initial tangential intensity (I_{TI}) to the fluid flow characteristics was conducted in the range from low to high I_{TI} values. To eliminate the effect of the other variables, the variables such as the size and shape of the geometry, the tangential inlet slope, the inlet aspect ratio, the position of tangential inlet and mass flow rate are kept constant.

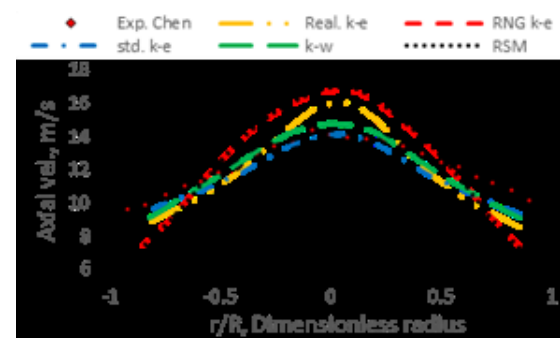
The dependent variables that quantified in this study are the turbulence intensity, the residence time and the pressure drop. These variables are chosen because they have significant effects to the overall burner performances. The turbulence intensity as a degree of the mixing and the residence time have a significant influence on the combustion process, while the pressure drop affects the operating cost of the burner.

3 Results and discussion

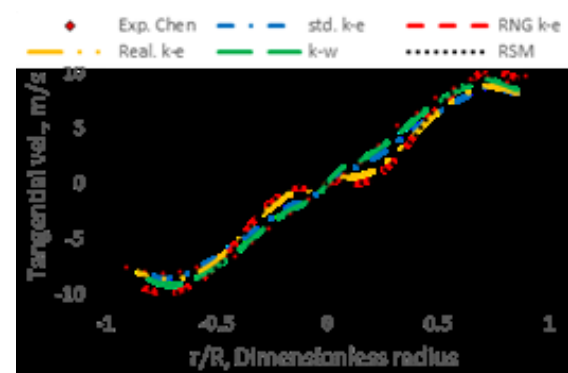
3.1 RANS models performance

The selection of the turbulent model among the RANS turbulent models is based on the ability of the models to agree with the experimental data of Chen et al. [4]. These data are used because they were measured from the chamber which has similar geometry to the tangential burner used in this study. The RANS turbulent models which are evaluated here are standard $k-\epsilon$, RNG $k-\epsilon$, Realizable $k-\epsilon$, $k-\omega$ and RSM model.

The detailed geometry of the Chen's chamber can be found on the original paper of Chen [4]. The model evaluations are done on the case of the high swirl flow (I_{TI} value = 0.8) and with mesh interval size 3.3% of the burner diameter. This mesh interval size is obtained by conducting the mesh size parametric study. The comparisons between our prediction results and the Chen experimental data are shown in Fig. 2.



(a) Axial velocity



(b) Tangential velocity

Fig. 2. Comparison of some RANS turbulent models performances.

Although with the inherent isotropic turbulent assumption, the $k-\epsilon$ turbulent models are able to arrive with good velocity predictions for a high swirl flow, especially the standard $k-\epsilon$ model. These predictions are more accurate than those given by RSM, although theoretically, the RSM model supposed to provide the better results because it was built under the anisotropic turbulent assumption. These are consistent with statement of Vazquez,

who reported that for an atmospheric swirl burner, the predictions of $k-\varepsilon$ model for axial and tangential velocity are better than RSM [6].

Quantitatively, the prediction results of standard $k-\varepsilon$ model deviate from experimental data about 12% for the tangential velocity and 5% for the axial velocity. In addition, the standard $k-\varepsilon$ turbulent model is easy to converge and has relatively low computational effort comparing to other RANS models. Based on the things above, the standard $k-\varepsilon$ turbulent model is chosen to quantify the fluid flow characteristics in this study.

3.2 Quantification of the effect of I_{TI} value to the fluid dynamic characteristics

The numerical quantifications in this study were conducted in the tangential burner (Fig. 1) that has 0° of the tangential inlet slope, 14 of the inlet aspect ratio and the tangential inlet position at the bottom of the frustum. The simulations were done using the standard $k-\varepsilon$ turbulent model at constant total mass flow rate of 0.24 kg/s.

3.2.1 Turbulence intensity

In this simulation, the values of the mean turbulence intensity of the flow are represented by the mean values of the turbulence intensity of 29 fluid flow tracks. The profiles of the turbulence intensity value for each track was shown in Fig. 3.

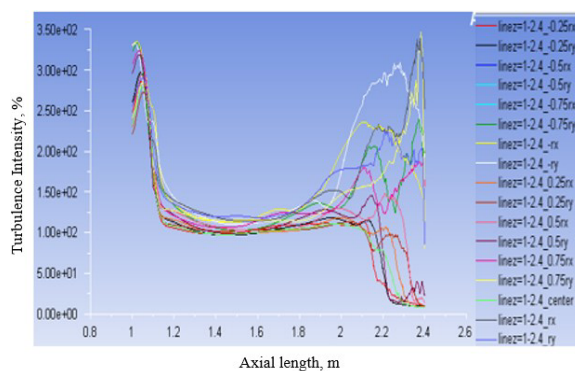


Fig. 3. Turbulence intensity profile along burner at several release points (case for $I_{TI} = 10$).

The turbulence intensity values near the tangential inlet and the outlet zone are greater than other zones along the burner, as shown in Fig. 3. The high value of the turbulence intensity near the tangential inlet zone ($z = \pm 1$) is caused by the mixing of the axial and tangential inlet flows. The high values of this variable near the outlet ($z = \pm 2.4$) is due to the sudden contraction.

The mean turbulence intensity along the tangential burner is influenced by the I_{TI} value. The higher the I_{TI} value, the higher the turbulence intensity value is. The profiles of the mean turbulence intensities for several I_{TI} values are shown by Fig. 4.

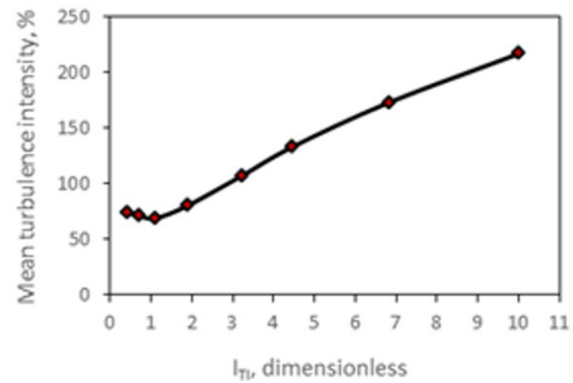
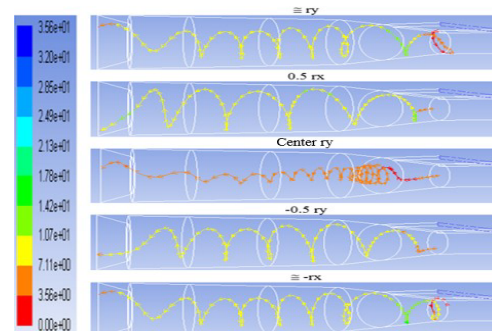


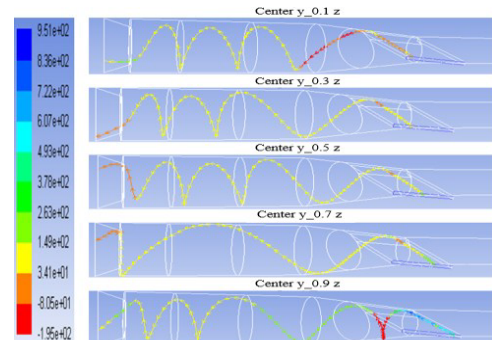
Fig. 4. Mean turbulence intensity profile in a tangential burner for several I_{TI} values.

3.2.2 Residence time

The air residence times in a burner are computed by dividing the path lengths of the air with the magnitude velocities. The air path length is determined by computing the air pathline formed along the burner. The air pathlines at various release points, either from the axial or the tangential inlet, are shown in Fig. 5. The air pathlines in the figures clearly showed that the flow structures throughout the burner are dominated by the tangential flow.



(a) Some release point at axial inlet



(b) Some release point at tangential inlet

Fig. 5. Air flow pathline for several release points (case for $I_{TI} = 10$).

A different finding, from those reported by Nemoda about flow structure was obtained in this research. Recirculation flow structure, that is supposed to be produced in high swirl flow, is not

found during the simulation, even on a very high swirl flow ($I_{TI} = 10$). Whereas according to Nemoda [8], the recirculation flow structure will be formed at I_{TI} value ≥ 2.48 . This indicates that the formation of the recirculation flow structure is not only determined by the I_{TI} but also determined by the other variables.

The mean residence time along the burner is obtained from the mean air residence time of 20 release points. The profiles of mean residence times in the tangential burner for some of I_{TI} values are given in Fig. 6. The mean residence times along the tangential burner are influenced by the I_{TI} values. The higher the I_{TI} value, the longer the pathline, and the greater the residence time is. Its influence is more significant on the high I_{TI} value.

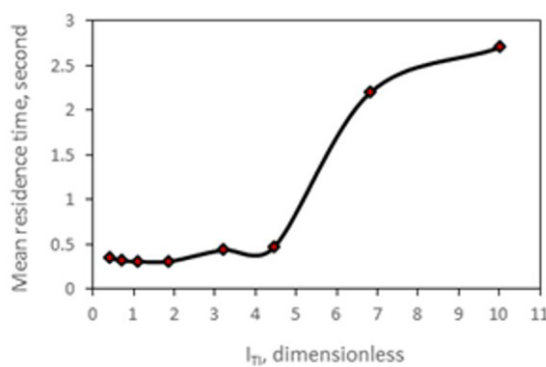


Fig. 6. Mean residence times in a tangential burner for several I_{TI} values.

3.2.3 Pressure drop

The mean pressure drop in this study is calculated from the difference between mean static pressure at the burner inlet and the burner outlet. The simulation results showed that the mean pressure drop across the burner is influenced by the I_{TI} value. Generally, the greater the I_{TI} value, the greater the pressure drop is. This is consistent with the results that are reported by Aydin, where the higher the Reynolds number (it means the higher the I_{TI} value), the higher the pressure drop is [11].

Within the range of I_{TI} values that is investigated here, the lowest mean pressure drop is produced at the I_{TI} value of 3.2. The profiles of the mean pressure drop in the tangential burner at various I_{TI} values are given in Fig. 7.

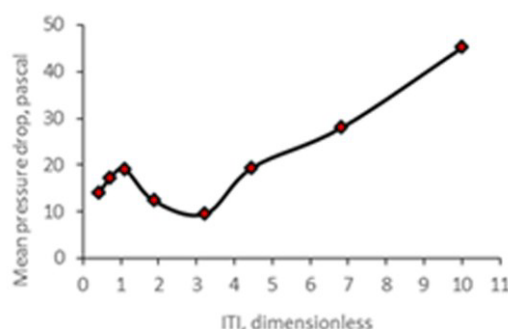


Fig.7. Mean pressure drop in a tangential burner for several I_{TI} values.

The effects of the I_{TI} on the mean pressure drop are more significant at higher I_{TI} value than the lower I_{TI} value. This correlates to the pathline (residence time) of the air along the burner where if the pathlines are longer, the pressure loss that is caused by the friction will be greater. The consistency between the residence time and the pressure drop curves can be seen from Fig. 6 and 7.

4. Conclusion

The numerical quantification of the fluid dynamic characteristics in a tangential burner has been carried out using the standard $k-\epsilon$ turbulent model. The simulation results concluded that three dimensional flow structures in a tangential burner are well described as the dominant tangential flows. The numerical quantifications revealed that the fluid dynamic characteristics are greatly affected by the initial tangential intensity.

In general, the higher the I_{TI} value, the greater the mean turbulence intensity, the longer the mean residence time and the higher the mean pressure drop are. At low I_{TI} values, the effect of I_{TI} on the mean turbulence intensity and the mean residence time are insignificant. The effect of I_{TI} on the mean turbulence intensity begin to be significant at the I_{TI} values ≥ 1.1 , while its effect on the mean residence time is significant at the I_{TI} values ≥ 4.5 . The lowest mean pressure drop in this study is found at I_{TI} value of 3.2.

Our thanks go to the Ministry of Research, Technology and Higher Education of the Republic of Indonesia for the funding support provided to the implementation of this research through the Decentralization Research Scheme.

References

1. S. Paulrud, C. Nilsson, Fuel, **83**, 813-821 (2004)
2. S. M. B. Kops, P. C. Malte, Department of Mechanical Engineering University of Washington, 1-49 (2004)
3. J. H. S. Arnao, D. J. O. Ferreira, C. G. Santos, J. E. Alvarez, L. P. Rangel, S. W. Park, Industrial, Mechatronic and Manufacturing Engineering, **9**, 798-801 (2015)
4. J. Chen, B. S. Haynes, D. F. A. Fletcher, Melbourne, Australia, 485-490 (1999)
5. J. F. Bourgouin, J. Moeck, D. Durox, T. Schuller, S. Candel, C.R. Mecanique, **341**, 211-219 (2013)
6. J. A. R. Vazquez, Thesis, University of Zaragoza, Spain, 1-192 (2012)
7. A. Escue and J. Cui, Appl. Math. Model, **34**, 2840-2849 (2010)
8. S. Nemoda, V. Bakic, S. Oka, G. Zivkovic, N. Crnomarkavic, Int. J. Heat Mass Tran., **48**, 4623-4632 (2005)
9. Z. Li, J. Jing, G Liu, Z. Chen, Chem. Eng. Sci., **65**, 1253-1260 (2010)
10. M. Momeni, C. Yin, S. K. Kær, T. B. Hansen, P. A. Jensen, P. Glarborg, Energ Fuel, **27**, 507-514 (2013)
11. Ansys Inc., Ansys Documentation, Ansys Inc., Canonsburg, PA, United States, (2013)



About the journal [Aims and scope](#)

About the journal

[Aims and scope](#) [Editorial board](#) [Indexed in](#) [Publishing Policies & Ethics](#) [Published by](#)

Aims & scope

MATEC Web of Conferences is an Open Access publication series dedicated to archiving conference proceedings dealing with all fundamental and applied research aspects related to Materials science, Engineering and Chemistry. All engineering disciplines are covered by the aims and scope of the journal: civil, naval, mechanical, chemical, and electrical engineering as well as nanotechnology and metrology. The journal concerns also all materials in regard to their physical-chemical characterization, implementation, resistance in their environment... Other subdisciplines of chemistry, such as analytical chemistry, petrochemistry, organic chemistry... and even pharmacology, are also welcome.

MATEC Web of Conferences offers a wide range of services from the organization of the submission of conference proceedings to the worldwide dissemination of the conference papers. It provides an efficient archiving solution, ensuring maximum exposure and wide indexing of scientific conference proceedings.

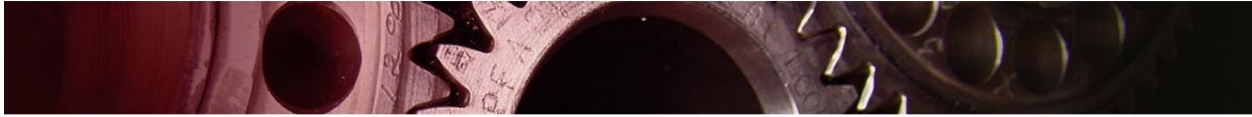
Proceedings are published under the scientific responsibility of the conference editors.

Main benefits

| | | |
|--|--|---|
| Open Access All the documents are free to read and download. Copyright is retained by the author(s) under the Creative Commons Attribution license . | Policy on re-use Conference papers may be subsequently updated, or enhanced, for further publication as a regular journal article. | Flexibility and speed The journal welcomes any scientific documents: traditional articles, posters, abstracts, slideshows, etc. They will be available online within 6-8 weeks of us receiving the contributions. |
| Identification Each document receives a DOI (Digital Object Identifier), and is indexed to Crossref®. | Indexation All documents will be indexed in main bibliographic databases. See Indexed in . | Metrics and other services Intelligent search engine, email alerts, list of related articles, citation tracking, page view count, links to social bookmarks, etc. |

MATEC Web of Conferences
eISSN: 2261-236X





[All issues](#) > [Volume 101 \(2017\)](#)

[← Previous issue](#)

[Table of Contents](#)

[Next issue >](#)

[Free Access](#) to the whole issue

MATEC Web of Conferences

Volume 101 (2017)

Sriwijaya International Conference on Engineering, Science and Technology (SICEST 2016)

Bangka Island, Indonesia, November 9-10, 2016

I. Iskandar, S. Ismadji, T.E. Agustina, I. Yani, L.N. Komariah and S. Hasyim (Eds.)

Export the citation of the selected articles [Export](#)

[Select all](#)

[Open Access](#)

Preface

Published online: 09 March 2017

PDF (68.3 KB)

[Open Access](#)

Statement of Peer review

Published online: 09 March 2017

PDF (40.8 KB)

- ∨ [Advances in Materials Science & Technology](#)
- ∨ [Emerging Concepts in Chemical Process & Energy Engineering](#)
- ∨ [Mechanical, Industrial and Manufacturing Engineering](#)
- ∨ [Applied Technology for Sustainable Environment](#)
- ∨ [Green Constructions](#)

- *Advances in Materials Science & Technology*

[Open Access](#)

Metal supported on natural zeolite as catalysts for conversion of ethanol to gasoline 01001

Anis Kristiani, Sudiarmanto Sudiarmanto, Fauzan Aulia, Luthfiana Nurul Hidayati and Haznan Abimanyu

Published online: 09 March 2017

DOI: <https://doi.org/10.1051/mateconf/201710101001>

[Abstract](#) | [PDF \(365.8 KB\)](#) | [References](#)

[Open Access](#)

Preparation of molecularly imprinted polymers simazine as material potentiometric sensor 01002

Yohandri Bow, Edy Sutriyono, Subriyer Nasir and Iskhag Iskandar

Published online: 09 March 2017

DOI: <https://doi.org/10.1051/mateconf/201710101002>

[Abstract](#) | [PDF \(1014 KB\)](#) | [References](#)

[Open Access](#)

Synthesis of grafted flocculants based on several kinds of starch and its performance in water turbidity removal 01003

Mujtahid Kaavessina, Sperisa Distantina and Fadilah

Published online: 09 March 2017

DOI: <https://doi.org/10.1051/mateconf/201710101003>

[Abstract](#) | [PDF \(470.9 KB\)](#) | [References](#)

[Open Access](#)

Effect of combination dope composition and evaporation time on the separation performance of cellulose acetate membrane for demak brackish water treatment 01004

Tutuk Djoko Kusworo, Budiyo, Diyono Ikhsan, Nur Rokhati, Aji Prasetyaningrum, F.R. Mutiara and N.R. Sofiana

Published online: 09 March 2017

DOI: <https://doi.org/10.1051/mateconf/201710101004>

[Abstract](#) | [PDF \(700.9 KB\)](#) | [References](#)

[Open Access](#)

Characterization of fermented broccoli (*Brassica oleracea* L.) and spinach (*Amaranthus* sp.) produced using microfiltration membrane as folic acid source for smart food formula 01005

Agustine Susilowati, Aspiyanto and Hakiki Melanie

Published online: 09 March 2017

DOI: <https://doi.org/10.1051/mateconf/201710101005>

[Abstract](#) | [PDF \(596.1 KB\)](#) | [References](#)

[Open Access](#)

Ammonium hydroxide addition and its influence on the catalytic activities of Pt-based catalysts for methane oxidation 01006

M Mardwita and M. Djoni Bustan

Published online: 09 March 2017

DOI: <https://doi.org/10.1051/mateconf/201710101006>

[Abstract](#) | [PDF \(374.6 KB\)](#) | [References](#)



Open Access

New method of thermal cycling stability test of phase change material 01007

Nandy Putra, Muhammad Amin, Rizky Achmad Luanto, Engkos A. Kosasih and Nasruddin A. Abdullah

Published online: 09 March 2017

DOI: <https://doi.org/10.1051/mateconf/201710101007>

[Abstract](#) | [PDF \(2.349 MB\)](#) | [References](#)



Open Access

Effect of ageing time 200 °C on microstructure behaviour of Al-Zn-Cu-Mg cast alloys 01008

Diah Kusuma Pratiwi and Nurhabibah Paramitha Eka Utami

Published online: 09 March 2017

DOI: <https://doi.org/10.1051/mateconf/201710101008>

[Abstract](#) | [PDF \(2.071 MB\)](#) | [References](#)



Open Access

Mechanical properties analysis of Al-9Zn-5Cu-4Mg cast alloy by T5 heat treatment 01009

Nurhabibah Paramitha Eka Utami and Hendri Chandra

Published online: 09 March 2017

DOI: <https://doi.org/10.1051/mateconf/201710101009>

[Abstract](#) | [PDF \(1.174 MB\)](#) | [References](#)



Open Access

Physical and mechanical properties of membrane Polyacrylonitrile 01010

Angung Mataram, Syahrul Nasution, Mazari Legi Wijaya and Gurruh Dwi Septano

Published online: 09 March 2017

DOI: <https://doi.org/10.1051/mateconf/201710101010>

[Abstract](#) | [PDF \(3.152 MB\)](#) | [References](#)



Open Access

Magnetic properties of barium ferrite after milling by high energy milling (hem) 01011

Novrita Idayanti, Tony Kristiantoro, Ardita Septiani and Ika Kartika

Published online: 09 March 2017

DOI: <https://doi.org/10.1051/mateconf/201710101011>

[Abstract](#) | [PDF \(1.034 MB\)](#) | [References](#)



Open Access

Hardness improvement on low carbon steel using pack carbonitriding method with holding time variation 01012

Poppy Puspitasari, Andoho Andoko, Heru Suryanto, Puput Risdanareni and Sandy Yudha

Published online: 09 March 2017

DOI: <https://doi.org/10.1051/mateconf/201710101012>

[Abstract](#) | [PDF \(5.860 MB\)](#) | [References](#)

[Open Access](#)
The Effect of Rotation Stirring on Macrosegregation in Bi-Sn Alloy 01013
Yeni Muriani Zulaida, Riyan Afrizal and Suryana Suryana
Published online: 09 March 2017
DOI: <https://doi.org/10.1051/mateconf/201710101013>
[Abstract](#) | [PDF \(2.372 MB\)](#) | [References](#)

[Open Access](#)
The characteristic of unsaturated polyester resin wettability toward glass fiber orientation, density and surface treatment 01014
Asep H. Saputra and Dena P. Hallatu
Published online: 09 March 2017
DOI: <https://doi.org/10.1051/mateconf/201710101014>
[Abstract](#) | [PDF \(493.5 KB\)](#) | [References](#)

[Open Access](#)
Experimental study on strength and stiffness connection of wooden truss structure 01015
Altho Sagara, Johannes Adhijoso Tjondro and Husain Abdurrahman Shiddiq
Published online: 09 March 2017
DOI: <https://doi.org/10.1051/mateconf/201710101015>
[Abstract](#) | [PDF \(2.013 MB\)](#) | [References](#)

[Open Access](#)
Influence of uncoated and coated plastic waste coarse aggregates to concrete compressive strength 01016
Heru Purnomo, Gandjar Pamudji and Madsuri Satim
Published online: 09 March 2017
DOI: <https://doi.org/10.1051/mateconf/201710101016>
[Abstract](#) | [PDF \(2.097 MB\)](#) | [References](#)

[Open Access](#)
Effect of longitudinal joint on the shear-key of hollow core slab which function as an rigid diaphragm 01017
Gambiro Soeprapto, Mukhlis Sunarso, Sumarsono, Ferryandy Murdono, Winda Agustin and Raynelda Siahaan
Published online: 09 March 2017
DOI: <https://doi.org/10.1051/mateconf/201710101017>
[Abstract](#) | [PDF \(2.496 MB\)](#) | [References](#)

[Open Access](#)
Atomistic-continuum hybrid analysis of dislocation behavior in spinodally decomposed Fe-Cr alloys 01018
Akiyuki Takahashi and Motoyasu Kanazawa
Published online: 09 March 2017
DOI: <https://doi.org/10.1051/mateconf/201710101018>
[Abstract](#) | [PDF \(2.064 MB\)](#) | [References](#)

[Open Access](#)
The effect of polymer coated pumice to the stiffness and flexural strength of reinforce concrete beam 01019
Indradi Wijatmiko, Ari Wibowo and Christin Remayanti
Published online: 09 March 2017
DOI: <https://doi.org/10.1051/mateconf/201710101019>
[Abstract](#) | [PDF \(774.8 KB\)](#) | [References](#)

[Open Access](#)
Flexural behaviour of reinforced concrete beams with discrete steel – polypropylene fibres 01020
Wan Amizah Wan Jusoh, Izni Syahrizal Ibrahim and Abdul Rahman Mohd Sam
Published online: 09 March 2017
DOI: <https://doi.org/10.1051/mateconf/201710101020>
[Abstract](#) | [PDF \(788.8 KB\)](#) | [References](#)

- [Open Access](#)
Mechanical and physical properties of metakaolin based geopolymer paste 01021
PuPut Risdanareni, Poppy Puspitasari, Edi Santoso and Edo Prasetya Adi
Published online: 09 March 2017
DOI: <https://doi.org/10.1051/mateconf/201710101021>
[Abstract](#) | [PDF \(1.425 MB\)](#) | [References](#)

- **Emerging Concepts in Chemical Process & Energy Engineering**

- [Open Access](#)
Experimental determination of monoethanolamine protonation constant and its temperature dependency 02001
Sholeh Ma'mun, Kamariah, Sukirman, Desi Kurniawan, Eleonora Amelia, Vitro Rahmat and Deasy R. Alwani
Published online: 09 March 2017
DOI: <https://doi.org/10.1051/mateconf/201710102001>
[Abstract](#) | [PDF \(173.2 KB\)](#) | [References](#)

- [Open Access](#)
Lactic acid production from date juice using *Lactobacillus casei* ATCC 393 in batch fermentation 02002
Mujtahid Kaavessina, Fitriani Khanifatun and Saeed M. Alzahrani
Published online: 09 March 2017
DOI: <https://doi.org/10.1051/mateconf/201710102002>
[Abstract](#) | [PDF \(1.032 MB\)](#) | [References](#)

- [Open Access](#)
Laboratory and pilot plant scale study on water dechlorination by medium pressure ultraviolet (UV) radiation 02003
Maryani Paramita Astuti, Rongjing Xie and Nicky Satyadharma Aziz
Published online: 09 March 2017
DOI: <https://doi.org/10.1051/mateconf/201710102003>
[Abstract](#) | [PDF \(1.066 MB\)](#) | [References](#)

- [Open Access](#)
Combination of CaCO_3 and Ca(OH)_2 as agents for treatment acid mine drainage 02004
Poedji Loekitowati Hariani, Salni Salni and Fahma Riyanti
Published online: 09 March 2017
DOI: <https://doi.org/10.1051/mateconf/201710102004>
[Abstract](#) | [PDF \(515.6 KB\)](#) | [References](#)

- [Open Access](#)
Partial oxidation of methane to methanol over catalyst ZSM-5 from coal fly ash and rice husk ash 02005
Fusia Mirda Yanti, S.D. Sumbogo Murti, Yuni K. Krisnandi and Adiarso
Published online: 09 March 2017
DOI: <https://doi.org/10.1051/mateconf/201710102005>
[Abstract](#) | [PDF \(2.092 MB\)](#) | [References](#)

- [Open Access](#)
Adsorption of Jumputan liquid waste by betel nuts activated carbon in a continuous fixed-bed adsorber 02006
Lia Cundari, Aris Setiawan Kemit and Baharuddin Rasyid Usman
Published online: 09 March 2017
DOI: <https://doi.org/10.1051/mateconf/201710102006>
[Abstract](#) | [PDF \(156.3 KB\)](#) | [References](#)



Open Access

Recovery of H₂SO₄ from spent acid waste using bentonite adsorbent 02007

Marwan Asof, Susila Arita Rachman, Winny Andalia Nurmawi and Cindy Ramayanti

Published online: 09 March 2017

DOI: <https://doi.org/10.1051/mateconf/201710102007>

[Abstract](#) | [PDF \(2.762 MB\)](#) | [References](#)



Open Access

Laboratory study of salinity and surfactant concentration effects on oil recovery 02008

Widia Yanti, Sugiatmo Kasmungin, Rabiatul Adawiyah and Blandina Kolanus

Published online: 09 March 2017

DOI: <https://doi.org/10.1051/mateconf/201710102008>

[Abstract](#) | [PDF \(438.7 KB\)](#) | [References](#)



Open Access

Remediation of leachate by composite NZVI-activated carbon in packed column 02009

Eka Sri Yusmartini, Muhammad Faizal and Marsi

Published online: 09 March 2017

DOI: <https://doi.org/10.1051/mateconf/201710102009>

[Abstract](#) | [PDF \(937.3 KB\)](#) | [References](#)



Open Access

Treatment of landfill leachate by electrocoagulation using aluminum electrodes 02010

Rusdianasari, Ahmad Taqwa, Jaksen and Adi Syakdani

Published online: 09 March 2017

DOI: <https://doi.org/10.1051/mateconf/201710102010>

[Abstract](#) | [PDF \(2.885 MB\)](#) | [References](#)

-
- [Open Access](#)
- The effect of pretreatment using sodium hydroxide and acetic acid to biogas production from rice straw waste 02011
Budyono, Aryantoko Wicaksono, Arif Rahmawan, Hashfi Hawali Abdul Matin, Larasati Gumilang Kencana Wardani, Tutuk Djoko Kusworo and Siswo Sumardiono
Published online: 09 March 2017
DOI: <https://doi.org/10.1051/mateconf/201710102011>
[Abstract](#) | [PDF \(668.7 KB\)](#) | [References](#)
-
- [Open Access](#)
- Storage tank materials for biodiesel blends; the analysis of fuel property changes 02012
Leily Nurul Komariah, Marwani, Sucia Aprisah and Yangia S.L Rosa
Published online: 09 March 2017
DOI: <https://doi.org/10.1051/mateconf/201710102012>
[Abstract](#) | [PDF \(859.0 KB\)](#) | [References](#)
-
- [Open Access](#)
- Bioethanol production from sodium hydroxide – dilute sulfuric acid pretreatment of rice husk via simultaneous saccharification and fermentation 02013
Novia, Vishnu K. Pareek and Tuty Emilia Agustina
Published online: 09 March 2017
DOI: <https://doi.org/10.1051/mateconf/201710102013>
[Abstract](#) | [PDF \(114.2 KB\)](#) | [References](#)
-
- [Open Access](#)
- Increasing biogas production from sugar cane baggase by anaerobic co-digestion with animal manure 02014
Siswo Sumardiono, Aldi Budi Riyanta, Hashfi Hawali Abdul Matin, Tutuk Djoko Kusworo, Bakti Jos and Budyono
Published online: 09 March 2017
DOI: <https://doi.org/10.1051/mateconf/201710102014>
[Abstract](#) | [PDF \(1013 KB\)](#) | [References](#)
- [Open Access](#)
- Combustion of producer gas from gasification of south Sumatera lignite coal using CFD simulation 02015
Fajri Vidian, Novia and Andy Suryatra
Published online: 09 March 2017
DOI: <https://doi.org/10.1051/mateconf/201710102015>
[Abstract](#) | [PDF \(1.480 MB\)](#) | [References](#)
-
- [Open Access](#)
- The effect of enzymatic pretreatment and c/n ratio to biogas production from rice husk waste during solid state anaerobic digestion (SS-AD) 02016
Syafurudin, Winardi Dwi Nugraha, Hashfi Hawali Abdul Matin and Budyono
Published online: 09 March 2017
DOI: <https://doi.org/10.1051/mateconf/201710102016>
[Abstract](#) | [PDF \(373.3 KB\)](#) | [References](#)
-
- [Open Access](#)
- Fuel consumption and emission on fuel mixer low-grade bioethanol fuelled motorcycle 02017
Setia Abikusna, Bambang Sugiarto and Azami Zulfan
Published online: 09 March 2017
DOI: <https://doi.org/10.1051/mateconf/201710102017>
[Abstract](#) | [PDF \(940.7 KB\)](#) | [References](#)
-
- [Open Access](#)
- Challenges and opportunities of microbial fuel cells (MFCs) technology development in Indonesia 02018
Bimastyaji Surya Ramadan and Purwono
Published online: 09 March 2017
DOI: <https://doi.org/10.1051/mateconf/201710102018>
[Abstract](#) | [PDF \(511.1 KB\)](#) | [References](#)

-
- [Open Access](#)
Bio-coal briquettes made from South Sumatera low rank coal and palm shell charcoal for using in small industries 02019
Riman Sipahutar, Irwin Bizzy, Muhammad Faizal and Olistiyo Maussa
Published online: 09 March 2017
DOI: <https://doi.org/10.1051/mateconf/201710102019>
[Abstract](#) | [PDF \(617.0 KB\)](#) | [References](#)

- Mechanical, Industrial and Manufacturing Engineering

-
- [Open Access](#)
Effect of initial tangential intensity on the fluid dynamic characteristics in tangential burner 03001
Pasymi, Yogi Wibisono Budhi and Yazid Bindar
Published online: 09 March 2017
DOI: <https://doi.org/10.1051/mateconf/201710103001>
[Abstract](#) | [PDF \(1.091 MB\)](#) | [References](#)

-
- [Open Access](#)
Effect degree of temperature subcooling in the performance of refrigeration with CFC, HFC and hydrocarbons refrigerant 03002
Prayudi Suparmin, Vendy Antono and Roswati Nurhasanah
Published online: 09 March 2017
DOI: <https://doi.org/10.1051/mateconf/201710103002>
[Abstract](#) | [PDF \(741.1 KB\)](#) | [References](#)

-
- [Open Access](#)
Effect of mixing parameters on the mixing time and density of composite HA/Ti6Al4V feedstock for powder injection molding 03003
Amir Arifin and Abu Bakar Sulong
Published online: 09 March 2017
DOI: <https://doi.org/10.1051/mateconf/201710103003>
[Abstract](#) | [PDF \(3.240 MB\)](#) | [References](#)

-
- [Open Access](#)
The current density of hydroxyapatite electrosynthesis by ion exchange resin chambers 03004
Adrian Nur, Nazriati Nazriati, Arif Jumari, Ega Fitri Novita Santi and Shafira Yaumil Asiffa
Published online: 09 March 2017
DOI: <https://doi.org/10.1051/mateconf/201710103004>
[Abstract](#) | [PDF \(794.1 KB\)](#) | [References](#)

-
- [Open Access](#)
A study of cement additive from varied heating temperature of coconut shell charcoal to increase cement strength 03005
Mursyidah, Novrianti, Adi Novriansyah and Teguh Prasetya Utama
Published online: 09 March 2017
DOI: <https://doi.org/10.1051/mateconf/201710103005>
[Abstract](#) | [PDF \(1.296 MB\)](#) | [References](#)

-
- [Open Access](#)
The simple fabrication of nanorods mass production for the dye-sensitized solar cell 03006
Dharmanto, Hendi Saryanto and Darwin Sebayang
Published online: 09 March 2017
DOI: <https://doi.org/10.1051/mateconf/201710103006>
[Abstract](#) | [PDF \(1.360 MB\)](#) | [References](#)

-
- [Open Access](#)
The design of high-temperature thermal conductivity measurements apparatus for thin sample size 03007
Syamsul Hadi, Fama Aqiftiar Falah, Agus Kurniawan and Suyitno
Published online: 09 March 2017
DOI: <https://doi.org/10.1051/mateconf/201710103007>
[Abstract](#) | [PDF \(225.1 KB\)](#) | [References](#)

[Open Access](#)

Visualization and pressure distribution of gas-liquid flow in $\frac{3}{4}$ inch plexyglass pipe diameter with the slope orientation upward, horizontal and downward 03008

Dewi Puspitasari, Marwan Marwani, Ichsan Ramdani and Ridho Mardhan Hadi

Published online: 09 March 2017

DOI: <https://doi.org/10.1051/mateconf/201710103008>

[Abstract](#) | [PDF \(2.883 MB\)](#) | [References](#)

[Open Access](#)

Optimization high vortex finder of cyclone separator with computational fluids dynamics simulation 03009

Caturwati Ni Ketut, Dwinanto and Attegar

Published online: 09 March 2017

DOI: <https://doi.org/10.1051/mateconf/201710103009>

[Abstract](#) | [PDF \(503.5 KB\)](#) | [References](#)

[Open Access](#)

Engine optimization grate multipurpose analysis method with quality function deployment 03010

Nukman, Irsyadi Yani and Firdaus

Published online: 09 March 2017

DOI: <https://doi.org/10.1051/mateconf/201710103010>

[Abstract](#) | [PDF \(2.373 MB\)](#) | [References](#)

[Open Access](#)

Experimental study on a hybrid loop heat pipe 03011

Iwan Setyawan, Imansyah Ibnu Hakim and Nandy Putra

Published online: 09 March 2017

DOI: <https://doi.org/10.1051/mateconf/201710103011>

[Abstract](#) | [PDF \(1.144 MB\)](#) | [References](#)

[Open Access](#)

A probability approach in cans identification 03012

Yulia Resti, Amrifan S. Mohruni, Firmansyah Burlian, Irsyadi Yani and Ali Amran

Published online: 09 March 2017

DOI: <https://doi.org/10.1051/mateconf/201710103012>

[Abstract](#) | [PDF \(1.561 MB\)](#) | [References](#)

[Open Access](#)

Vibration analysis of rotary cement kiln using finite element method 03013

Hasan Basri, Irsyadi Yani and Akbar Teguh Prakoso

Published online: 09 March 2017

DOI: <https://doi.org/10.1051/mateconf/201710103013>

[Abstract](#) | [PDF \(1.268 MB\)](#) | [References](#)

[Open Access](#)

Influences of pitch-length louvered strip insert on thermal characteristic in concentric pipe heat exchanger 03014

Indri Yaningsih and Agung Tri Wijayanta

Published online: 09 March 2017

DOI: <https://doi.org/10.1051/mateconf/201710103014>

[Abstract](#) | [PDF \(276.9 KB\)](#) | [References](#)

[Open Access](#)

Performance of palm oil as a biobased machining lubricant when drilling inconel 718 03015

Erween Abd Rahim and Hiroyuki Sasahara

Published online: 09 March 2017

DOI: <https://doi.org/10.1051/mateconf/201710103015>

[Abstract](#) | [PDF \(786.1 KB\)](#) | [References](#)

-
- [Open Access](#)
Evaluation of cutting force and surface roughness in high-speed milling of compacted graphite iron 03016
Mohd Azlan Suhaimi, Kyung-Hee Park, Safan Sharif, Dong-Won Kim and Amrifan Saladin Mohruni
Published online: 09 March 2017
DOI: <https://doi.org/10.1051/mateconf/201710103016>
[Abstract](#) | [PDF \(1.220 MB\)](#) | [References](#)
-

- [Open Access](#)
Tandem bike design for apartment residents as an idea to reduce air pollution 03017
Bambang Iskandriawan, Jatmiko, Eri Naharani Ustazah and Firman Hawari
Published online: 09 March 2017
DOI: <https://doi.org/10.1051/mateconf/201710103017>
[Abstract](#) | [PDF \(7.400 MB\)](#) | [References](#)
-

- Applied Technology for Sustainable Environment

- [Open Access](#)
Numerical model for pollutant dispersion in the Dumai estuary 04001
Mubarak, Sigit Sutikno and Rena Dian Merian
Published online: 09 March 2017
DOI: <https://doi.org/10.1051/mateconf/201710104001>
[Abstract](#) | [PDF \(4.098 MB\)](#) | [References](#)
-

- [Open Access](#)
Analysis of erosion hazardous level and sedimentation in Manna Watershed, Bengkulu Province Indonesia 04002
Khairul Armi, Muhammad Faiz Barchia and Yuzuar Aprizal
Published online: 09 March 2017
DOI: <https://doi.org/10.1051/mateconf/201710104002>
[Abstract](#) | [PDF \(3.147 MB\)](#) | [References](#)

[Open Access](#)
Preliminary study of the human activities and perception on the groundwater conservation in lowlands of Semarang 04003
Novie Susanto, Thomas Triadi Putranto and Dian Agus Widiarso
Published online: 09 March 2017
DOI: <https://doi.org/10.1051/mateconf/201710104003>
[Abstract](#) | [PDF \(588.6 KB\)](#) | [References](#)

[Open Access](#)
Modelling of phosphate enrichment and trophic status of Sipin Lake Jambi using TSI Carlson method 04004
Ira Galih Prabasari, Hutwan Syarifuddin and Damris Muhammad
Published online: 09 March 2017
DOI: <https://doi.org/10.1051/mateconf/201710104004>
[Abstract](#) | [PDF \(961.7 KB\)](#) | [References](#)

[Open Access](#)
WindSat and RAMA Buoy: a comparison of ocean-atmosphere data 04005
Ayu Agustin, Wijaya Mardiansyah, Dedi Setiabudidaya and Iskhaq Iskandar
Published online: 09 March 2017
DOI: <https://doi.org/10.1051/mateconf/201710104005>
[Abstract](#) | [PDF \(2.234 MB\)](#) | [References](#)

[Open Access](#)
Assessment of indoor air quality in comparison using air conditioning and fan system in printing premise 04006
Nazirah Ramlan, Siti Nurhalimatul Husna Ahmad, Eeydzah Aminuddin, Hazrul Abdul Hamid, Siti Khalijah Yaman and Abd Halid Abdullah
Published online: 09 March 2017
DOI: <https://doi.org/10.1051/mateconf/201710104006>
[Abstract](#) | [PDF \(210.0 KB\)](#) | [References](#)



Open Access

Surface-flow wetland for water reclamation at Batamindo Industrial Park 04007

Chris Salim, Andita Rachmania and Rahma Dewi

Published online: 09 March 2017

DOI: <https://doi.org/10.1051/mateconf/201710104007>

[Abstract](#) | [PDF \(500.6 KB\)](#) | [References](#)



Open Access

Lessons learned in developing a green environment at the Engineering Faculty, University of Indonesia 04008

Gabriel Andari Kristanto, Cindy Priadi, Nyoman Suwartha, Eryl Bahsan and Arief Udhiarto

Published online: 09 March 2017

DOI: <https://doi.org/10.1051/mateconf/201710104008>

[Abstract](#) | [PDF \(695.2 KB\)](#) | [References](#)



Open Access

Allocation of potential value socio-ecology post tin mining Kolong in Bangka Island 04009

Wahyudi Himawan, Fachrurrojie Sjarkowie, Indra Yustian and Ardiyan Saptawan

Published online: 09 March 2017

DOI: <https://doi.org/10.1051/mateconf/201710104009>

[Abstract](#) | [PDF \(886.8 KB\)](#) | [References](#)



Open Access

The Impact of tin mining in Bangka Belitung and its reclamation studies 04010

Eddy Nurtjahya, Jennifer Franklin, Umroh and Fournita Agustina

Published online: 09 March 2017

DOI: <https://doi.org/10.1051/mateconf/201710104010>

[Abstract](#) | [PDF \(538.2 KB\)](#) | [References](#)

- [Open Access](#)
Olistostrome and the mesozoic tectonic of the bantimala complex, South Sulawesi 04011
MS Kaharuddin, A.M. Imran, Chalid Idham Abdullah and Asri Jaya
Published online: 09 March 2017
DOI: <https://doi.org/10.1051/mateconf/201710104011>
[Abstract](#) | [PDF \(8.021 MB\)](#) | [References](#)
-
- [Open Access](#)
Collaboration of high activity soil and geological structure factors in Pagelaran soil creep occurrence, Indonesia 04012
Ahmad F. Salam, T. H. W. Kristyanto, Asriza, Syahputra Reza, Albert S. Tempessy and Tito L. Indra
Published online: 09 March 2017
DOI: <https://doi.org/10.1051/mateconf/201710104012>
[Abstract](#) | [PDF \(2.874 MB\)](#) | [References](#)
-
- [Open Access](#)
Environmental value losses as impacts of natural resources utilization of in coal open mining 04013
Restu Juniah, Rinaldy Dalimi, M. Suparmoko, Setyo S Moersidik and Harry Waristian
Published online: 09 March 2017
DOI: <https://doi.org/10.1051/mateconf/201710104013>
[Abstract](#) | [PDF \(124.8 KB\)](#) | [References](#)
-
- [Open Access](#)
Marine ecology conditions at Weda Bay, North Maluku based on statistical analysis on distribution of recent foraminifera 04014
Anis Kurniasih, Septriono Hari Nugroho and Reddy Setyawan
Published online: 09 March 2017
DOI: <https://doi.org/10.1051/mateconf/201710104014>
[Abstract](#) | [PDF \(693.3 KB\)](#) | [References](#)
- [Open Access](#)
Effect of socioeconomic status and institution of the environmental concern level 04015
Zuber Angkasa Wazir
Published online: 09 March 2017
DOI: <https://doi.org/10.1051/mateconf/201710104015>
[Abstract](#) | [PDF \(899.6 KB\)](#) | [References](#)
-
- [Open Access](#)
Source rock formation evaluation using TOC & Ro log model based on well-log data procesing: study case of Ngimbang formation, North East Java basin 04016
Yosar Fatahillah, Widya Utama, Kukuh Suprayogi, Anik Hilyah and Iqbal Maulana
Published online: 09 March 2017
DOI: <https://doi.org/10.1051/mateconf/201710104016>
[Abstract](#) | [PDF \(230.0 KB\)](#) | [References](#)
-
- [Open Access](#)
Iron ore deposits model using geoelectrical resistivity method with dipole-dipole array 04017
Adree Octova and Dedi Yulhendra
Published online: 09 March 2017
DOI: <https://doi.org/10.1051/mateconf/201710104017>
[Abstract](#) | [PDF \(2.887 MB\)](#) | [References](#)
-
- [Open Access](#)
The study of ore minerals parageneses in Ponorogo area, East Java 04018
Endang Wiwik Dyah Hastuti
Published online: 09 March 2017
DOI: <https://doi.org/10.1051/mateconf/201710104018>
[Abstract](#) | [PDF \(2.745 MB\)](#) | [References](#)

-
- [Open Access](#)
Geothermal hot water potential at Parangwedang, Parangtritis, Bantul, Yogyakarta as main support of Geotourism 04019
KRT. Nur Suhascaryo, Hadi Purnomo and Jatmika Setiawan
Published online: 09 March 2017
DOI: <https://doi.org/10.1051/mateconf/201710104019>
[Abstract](#) | [PDF \(2.133 MB\)](#) | [References](#)
-
- [Open Access](#)
Pleistocene reef development in Bulukumba, South Sulawesi 04020
Andi Muhammad Imran, Ratna Husein, Meutia Farida and Afdan Prayudi
Published online: 09 March 2017
DOI: <https://doi.org/10.1051/mateconf/201710104020>
[Abstract](#) | [PDF \(5.074 MB\)](#) | [References](#)
-
- [Open Access](#)
Development of erosion risk map using fuzzy logic approach 04021
Manyuk Fauzi, Imam Suprayogi, Sigit Sutikno, Ari Sandhyavitri and Eko Riyawan
Published online: 09 March 2017
DOI: <https://doi.org/10.1051/mateconf/201710104021>
[Abstract](#) | [PDF \(2.189 MB\)](#) | [References](#)
-
- [Open Access](#)
Drought mitigation participatory at Pinang Luar Lowland, West Borneo (Indonesia) 04022
Henny Herawati and Stefanus B. Soeryamassoeka
Published online: 09 March 2017
DOI: <https://doi.org/10.1051/mateconf/201710104022>
[Abstract](#) | [PDF \(3.135 MB\)](#) | [References](#)
-
- [Open Access](#)
Heave induced reduction of friction capacity of pile embedded in clays 04023
Gogot Setyo Budi and Gondo Wibowo Tantri
Published online: 09 March 2017
DOI: <https://doi.org/10.1051/mateconf/201710104023>
[Abstract](#) | [PDF \(1022 KB\)](#) | [References](#)
-
- [Open Access](#)
Options for land conservation practices based on land use and land degradation in upland Luas Watershed Bengkulu Indonesia 04024
Muhammad Faiz Barchia, Khairul Amri and Friski Namura
Published online: 09 March 2017
DOI: <https://doi.org/10.1051/mateconf/201710104024>
[Abstract](#) | [PDF \(3.817 MB\)](#) | [References](#)
-
- [Open Access](#)
Analysis on the influence of rainfall and mine water ratio against pH in East pit 3 West Banko coal mine 04025
Neny Rochyani, Ngudiantoro and Helmi Harris
Published online: 09 March 2017
DOI: <https://doi.org/10.1051/mateconf/201710104025>
[Abstract](#) | [PDF \(120.5 KB\)](#) | [References](#)
-
- [Open Access](#)
The influence of Musi river sedimentation to the aquatic environment 04026
Achmad Syarifudin
Published online: 09 March 2017
DOI: <https://doi.org/10.1051/mateconf/201710104026>
[Abstract](#) | [PDF \(1.046 MB\)](#) | [References](#)

-
- [Open Access](#)
Industrialized building system - an innovative construction method 05001
Anis Saggaff
Published online: 09 March 2017
DOI: <https://doi.org/10.1051/mateconf/201710105001>
[Abstract](#) | [PDF \(6.784 MB\)](#) | [References](#)
-
- [Open Access](#)
Track access charge for Indonesian railways using full cost method: improving industry competitiveness 05002
Mohammed Ali Berawi, Perdana Miraj, Abdur Rohim Boy Berawi, Nahry and Jachrizal Sumabrata
Published online: 09 March 2017
DOI: <https://doi.org/10.1051/mateconf/201710105002>
[Abstract](#) | [PDF \(499.6 KB\)](#) | [References](#)
-
- [Open Access](#)
Study on effectiveness of flood control based on risk level: case study of Kampung Melayu Village and Bukit Duri Village 05003
Mohammad Farid, Harni Harumi Pusparani, Muhammad Syahril Badri Kusuma and Suardi Natasaputra
Published online: 09 March 2017
DOI: <https://doi.org/10.1051/mateconf/201710105003>
[Abstract](#) | [PDF \(16.24 MB\)](#) | [References](#)
-
- [Open Access](#)
Saturated and unsaturated stability analysis of slope subjected to rainfall infiltration 05004
Nurly Gofar and Harianto Rahardjo
Published online: 09 March 2017
DOI: <https://doi.org/10.1051/mateconf/201710105004>
[Abstract](#) | [PDF \(1.469 MB\)](#) | [References](#)
-
- [Open Access](#)
Parametric study on the effect of rainfall pattern to slope stability 05005
Fathiyah Hakim Sagitaningrum and Erly Bahsan
Published online: 09 March 2017
DOI: <https://doi.org/10.1051/mateconf/201710105005>
[Abstract](#) | [PDF \(3.853 MB\)](#) | [References](#)
-
- [Open Access](#)
The study of the usage of coral and limestone aggregates as asphaltic layer on coastal structures 05006
Adelia Dwidarma Nataadmadja, Oki Setyandito, Fiona Maida Basrian and Michael Grashinton Kurniawardhani
Published online: 09 March 2017
DOI: <https://doi.org/10.1051/mateconf/201710105006>
[Abstract](#) | [PDF \(2.866 MB\)](#) | [References](#)
-
- [Open Access](#)
Influence of pore water pressure to seepage and stability of embankment dam (case study of Sermo Dam Yogyakarta, Indonesia) 05007
Undayani Cita Sari, Sri Prabandiyani Retno Wardani, Suharyanto and Windu Partono
Published online: 09 March 2017
DOI: <https://doi.org/10.1051/mateconf/201710105007>
[Abstract](#) | [PDF \(755.6 KB\)](#) | [References](#)
-
- [Open Access](#)
Rainwater quality improvement using zeolite, activated carbon, limestone and preheated 400°C limestone 05008
Meilani, S. Syafalni, Yulianto Santoso and Gorga Green Malau
Published online: 09 March 2017
DOI: <https://doi.org/10.1051/mateconf/201710105008>
[Abstract](#) | [PDF \(772.6 KB\)](#) | [References](#)



Open Access

Cracking of open traffic rigid pavement 05009
Chatarina Niken, Yudi Siswanto, Widodo and Elly Tjahjono
Published online: 09 March 2017
DOI: <https://doi.org/10.1051/mateconf/201710105009>
Abstract | PDF (1.862 MB) | References



Open Access

Development of site class and site coefficient maps of Semarang, Indonesia using field shear wave velocity data 05010
Windu Partono, Masyhur Irsyam and Sri Prabandiyani Retno Wardani
Published online: 09 March 2017
DOI: <https://doi.org/10.1051/mateconf/201710105010>
Abstract | PDF (1.865 MB) | References



Open Access

Port performance evaluation tool based on microsimulation model 05011
Jzolanda Tsavalista Burhani, Febri Zukhruf and Russ Bona Frazila
Published online: 09 March 2017
DOI: <https://doi.org/10.1051/mateconf/201710105011>
Abstract | PDF (738.2 KB) | References



Open Access

Bamboo reinforced concrete slab with styrofoam lamina filler as solution of lightweight concrete application 05012
Ari Wibowo, Indradi Wijatmiko and Christin Remayanti Nainggolan
Published online: 09 March 2017
DOI: <https://doi.org/10.1051/mateconf/201710105012>
Abstract | PDF (4.651 MB) | References



Open Access

Regression models for compressive strength of concrete under different curing conditions 05013

Kolawole Adisa Olonade, Heni Fitriani and Olutobi Toluwalase Kola

Published online: 09 March 2017

DOI: <https://doi.org/10.1051/mateconf/201710105013>

[Abstract](#) | [PDF \(2.528 MB\)](#) | [References](#)



Open Access

Performance of rainwater harvesting system based on roof catchment area and storage tank capacity 05014

Imroatul C. Juliana, M. Syahril Badri Kusuma, M. Cahyono, Hadi Kardhana and Widjaja Martokusumo

Published online: 09 March 2017

DOI: <https://doi.org/10.1051/mateconf/201710105014>

[Abstract](#) | [PDF \(1.967 MB\)](#) | [References](#)



Open Access

Hydrologic modelling using TRMM-based rainfall products for flood analysis 05015

Sigit Sutikno, Yohanna Lilis Handayani, Manyuk Fauzi, Fitriani, Ariani Kurnia and Rinaldi

Published online: 09 March 2017

DOI: <https://doi.org/10.1051/mateconf/201710105015>

[Abstract](#) | [PDF \(4.074 MB\)](#) | [References](#)



Open Access

The application of backpropagation neural network method to estimate the sediment loads 05016

Taufik Ari Gunawan, M. Syahril Badri Kusuma, M. Cahyono and Joko Nugroho

Published online: 09 March 2017

DOI: <https://doi.org/10.1051/mateconf/201710105016>

[Abstract](#) | [PDF \(1.522 MB\)](#) | [References](#)



Open Access

Automatic gate design model from wood & tire for farmers 05017

Ivan Indrawan, Nursyamsi and Sayed Iskandar Muda

Published online: 09 March 2017

DOI: <https://doi.org/10.1051/mateconf/201710105017>

[Abstract](#) | [PDF \(4.366 MB\)](#) | [References](#)



Open Access

Analysis characteristic of corruption in construction project in Indonesia 05018

Felix Hidayat and Sherly Mulyanto

Published online: 09 March 2017

DOI: <https://doi.org/10.1051/mateconf/201710105018>

[Abstract](#) | [PDF \(350.0 KB\)](#) | [References](#)



Open Access

Accuracy analysis of SRTM usage for upper Citarum River flood modeling 05019

Riza Inanda Siregar

Published online: 09 March 2017

DOI: <https://doi.org/10.1051/mateconf/201710105019>

[Abstract](#) | [PDF \(1.542 MB\)](#) | [References](#)



Open Access

Multi performance option in direct displacement based design 05020

Ima Muljati, Yonatan and Adrian Hartono

Published online: 09 March 2017

DOI: <https://doi.org/10.1051/mateconf/201710105020>

[Abstract](#) | [PDF \(793.5 KB\)](#) | [References](#)



Open Access

Recycled aggregates in concrete production: engineering properties and environmental impact 05021

Mohammed Seddik Meddah

Published online: 09 March 2017

DOI: <https://doi.org/10.1051/mateconf/201710105021>

[Abstract](#) | [PDF \(2.403 MB\)](#) | [References](#)



Open Access

An analysis of activity timing and mode choice behavior for fixed time workers 05022

Melawaty Agustien, Ade Sjafruddin, Harun Al Rasyid S. Lubis and Sony S. Wibowo

Published online: 09 March 2017

DOI: <https://doi.org/10.1051/mateconf/201710105022>

[Abstract](#) | [PDF \(775.1 KB\)](#) | [References](#)



Open Access

Floodplain simulation for Musi River using integrated 1D/2D hydrodynamic model 05023

Muhammad B. Al Amin, Sarino and Helmi Haki

Published online: 09 March 2017

DOI: <https://doi.org/10.1051/mateconf/201710105023>

[Abstract](#) | [PDF \(5.729 MB\)](#) | [References](#)



Open Access

Impacts of long-span bamboo structure towards architectural-spatial experience 05024

Revian Nathanael Wirabuana and Anastasia Maurina

Published online: 09 March 2017

DOI: <https://doi.org/10.1051/mateconf/201710105024>

[Abstract](#) | [PDF \(4.278 MB\)](#) | [References](#)

- [Open Access](#)
A topology of residents' based on preferences for sustainable riparian settlement in Palembang, Indonesia 05025
Maya Fitri, Sugeng Triyadi and Ismet B Harun
Published online: 09 March 2017
DOI: <https://doi.org/10.1051/matecconf/201710105025>
[Abstract](#) | [PDF \(2.696 MB\)](#) | [References](#)

- [Open Access](#)
Typology of accessibility between planned and unplanned settlement 05026
Tin Budi Utami and Budi Susetyo
Published online: 09 March 2017
DOI: <https://doi.org/10.1051/matecconf/201710105026>
[Abstract](#) | [PDF \(1.690 MB\)](#) | [References](#)

- [Open Access](#)
Architecture, space and power in historical multi-ethnic city Gresik 05027
Dian Ariestadi, Antariksa, Lisa Dwi Wulandari and Surjono
Published online: 09 March 2017
DOI: <https://doi.org/10.1051/matecconf/201710105027>
[Abstract](#) | [PDF \(2.731 MB\)](#) | [References](#)

- [Open Access](#)
Gubeng bridge in Surabaya, a dutch architect c. citroen's work in the 1925 Paris exhibition 05028
Joko Triwinarto Santoso
Published online: 09 March 2017
DOI: <https://doi.org/10.1051/matecconf/201710105028>
[Abstract](#) | [PDF \(1.422 MB\)](#) | [References](#)



SICEST

Certificate
for Participation

We certify that Ms/Mr

Pasymi

has participated as

Oral Presenter

in the Sriwijaya International Conference on Engineering,
Science & Technology held in Bangka Island,
Indonesia 8-10 November 2016

Dean



Prof. Subriyer Nasir, Ph.D.

Executive Chairman



Dr. Muhammed Feizal